

DIP2K10

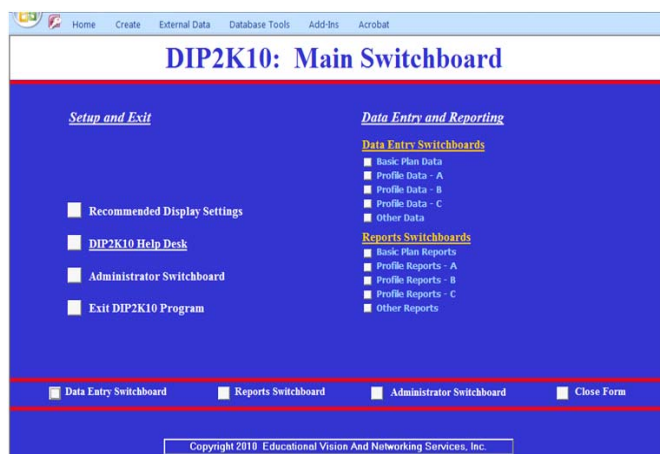
District Improvement Plan 2010

DIP2K10: District Improvement Plan 2010 was released July 1, 2010 in conjunction with the 12th anniversary of Educational Vision And Networking Services, Inc.

DIP2K10 is a relational database application designed to facilitate and encourage development, and regular maintenance, of effective district improvement plans. It is designed to take advantage of structured planning, yet provides flexibility in the contents of improvement plans. **DIP2K10** is compatible to the school level program SIP2K10. The program is designed for ease of use without sacrificing key elements of effective planning.

DIP2K10 is a district improvement planning tool developed by a former Associate Superintendent of a public school system in North Carolina. This product is designed for school districts to create a district improvement plan. It is not designed to compile all individual school plans into one composite plan.

The design of **DIP2K10** provides a framework for assisting school districts in a systematic process for developing and monitoring a comprehensive strategic plan for continued growth and development.



One of the main features of **DIP2K10** is the ability to generate **multiple** categories of **action plans** through a **single** set of comprehensive **data entry**.

The **District Profile Data** section provides a tool for monitoring progress in a variety of categories. **DIP2K10** will provide more components designed for local flexibility in the amount and types of profile data schools can include with the plan.

Major Components

Main Switchboard - Primary distribution point of navigating through the **DIP2K10** software

Data Entry Switchboard - Gateway through which the various types of data are entered (school data, analysis of current practices, vision/mission/beliefs, goals, objectives, strategies, persons responsible, budget, timelines, comprehensive action plan, and profile data, etc.)

The data entry process is separated from the reporting process in order to facilitate more efficient data entry.

Reports Switchboard - Gateway through which various reports are selected for viewing/printing (reports matching the various type of data entry elements, composite action plan printing, profile data elements, system defined reports, etc.)

The user can generate **26 or more types of action plans** with a **single set of data entry** (SIP, SACS, Safe School, Title I, Staff Development, etc.)

Annual Update Switchboard - Gateway through which school improvement plan annual updates, or other data edit-

Ordering Instructions

Ordering Instructions

1. Complete the form with appropriate authorizing name and signature. 2. Attach purchase order or check payable to: EVANS, Inc., 3. Mail form with check/purchase order to Educational Vision And Networking Services, Inc., P.O. Box 68, Hollister, North Carolina 27844. 4. Send faxed orders to (252)257-0345.

Ship To:

Bill To:

P.O. DATE	P.O. NUMBER	SHIP VIA	F.O.B. POINT	TERMS
		UPS Ground		30 Days

QTY	PART #	DESCRIPTION	UNIT PRICE	TOTAL
	DIP2K10	District Improvement Plan 2010 (for Windows 95 or higher and Microsoft ® Access 2000 or higher)	249.95	

SUBTOTAL

SALES TAX

SHIPPING & HANDLING \$10.00 PER PROGRAM *

OTHER

TOTAL

Printed Name of Authorizing Person

Authorized Signature

Date

* Volume shipping rates available. See website.



Educational Vision And Networking Services, Inc.

Ralph Evans, Ed.S.

Post Office Box 68, Hollister, North Carolina 27844

Phone (252) 257-4085 Fax: (252) 257-0345

ralph@educationalvision.com

www.educationalvision.com