

**Educational Vision And Networking Services, Inc.**

*“Focusing In the Right Direction”*

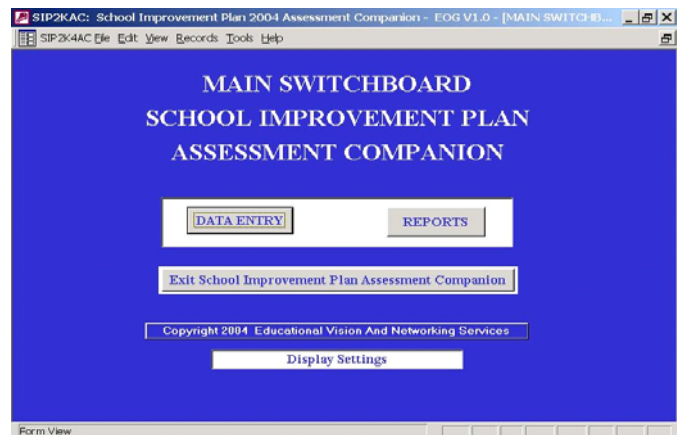
Volume 3 Issue 1

January 2005

## SIP2K4AC-EOG Anniversary Release

*SIP2K4AC-EOG: School Improvement Plan 2004 Assessment Companion End of Grade* was released January, 2005 in conjunction with the 6th anniversary of Educational Vision And Networking Services, Inc.

**SIP2K4AC-EOG** is a relational database application designed to generate End-of-Grade targets using the North Carolina prediction formulas. The program calculates an approximate growth expectation for a school average. It is designed to assist the user in processing and analyzing data to be used in preparing the school improvement plan. **SIP2K4AC-EOG** is adaptable to individuals with a wide range of computer skills. The program is designed for ease of use without sacrificing key elements of data analysis and effective planning.



For more information about this product see the SIP2K4AC brochure or visit the following website:  
[www.educationalvision.com](http://www.educationalvision.com)

## SIP2K4AC-EOC Coming Soon

*SIP2K4AC-EOC: School Improvement Plan 2004 Assessment Companion End of Course* will be released soon.

**SIP2K4AC-EOC** is a relational database application designed to perform calculations based on the North Carolina EOC prediction formulas. It can be used to

calculate approximate growth expectations for high schools based on school wide averages. It is designed to assist the user in processing and analyzing data to be used in preparing the school improvement plan. **SIP2K4AC-EOC** is designed for ease of use without sacrificing key elements of data analysis and effective planning.

## Other Products and Services Available

### Customized Relational Databases

(such as RECAST, GEARUP, HCAP, Dropout Prevention, and others as needed)

### AS400 Query Design

### Database Development and Management

### Desktop Computer Applications

### Human Resource Management Systems

### Job Descriptions

### Program Evaluation

### Salary Schedules

### School Improvement Planning

# Product/Service Description and Pricing

## SIP2K4: School Improvement Plan 2004

Cost: \$249.95 plus tax, and shipping and handling (Upgrade version \$129.95) \* Price subject to change.

## SIP2K4AC: School Improvement Plan 2004 Assessment Companion

Cost: \$129.95 plus tax, and shipping and handling.\* Price subject to change.

## Customized Relational Databases

Designed for the collection and management of information and/or services provided. They are designed to assist the user in processing and analyzing data to be used in implementing and evaluating programs. The design includes a user-friendly interface.

Cost: Negotiable

## AS400 Query Design

Assistance with creating queries to more efficiently manage repetitive multiple tasks. Queries save time by providing a design for creating reports and files that are needed repeatedly by the user.

Cost: Negotiable

## Database Development and Management

Assistance with creating and managing relational databases. In an information age, better decisions are made when better information is available. Databases can be designed to meet specific information needs, while making the user interface less technical. This service is useful for organizations without the time and/or technical expertise to develop a relational database.

Cost: Negotiable

## Desktop Computer Applications

Assistance with some of the more common desktop applications, such as: Microsoft Office Suite (Excel, Word, PowerPoint, and Access), Publisher and Adobe Acrobat.

Cost: Negotiable

## Human Resource Management Systems

Assistance with managing human resource data. Services include assistance with setting up and utilizing the North Carolina HRMS system.

Cost: Negotiable

## Job Descriptions

Assistance with developing job descriptions.

Cost: Negotiable

## Program Evaluation

Analysis and evaluation of program implementation.

Cost: Negotiable

## Salary Schedules

Development of employee salary schedules. Specializing in classified personnel and central office administrators.

Cost: Negotiable

## School Improvement Planning

Assistance with analyzing current status and using appropriate data for decision-making in the school improvement process. Emphasis is placed on streamlining the management of data and reducing the amount of redundant data entry for multiple types of improvement plans.

Cost: Negotiable

# Qualifications

Ralph Evans is the Founder and President of Educational Vision And Networking Services, Inc. His career spans more than 32 years of professional experience in education, including: high school mathematics and physics teacher, high school assistant principal, middle school principal, Chapter 1 Director, Assistant Superintendent and Associate Superintendent for Human Resources and Systemic Improvement. His variety of educational experiences and passion for utilizing technology in effectively managing the many hats worn by school administrators provide him with a broad understanding of how to make administrators' jobs more manageable. Mr. Evans holds a B.S. in Mathematics w/minor in Physics (Pembroke State University), an M.A. in Educational Administration (North Carolina Central University) and an Ed.S. in Educational Administration (East Carolina University). He holds a North Carolina license in mathematics, mentor, advanced principal, and advanced superintendent. Mr. Evans has held numerous leadership positions on regional and statewide committees and has made presentations at regional, state and national conferences. He has been trained in designing SQL Server Databases and in all the components of Microsoft Office.



**Educational Vision And Networking Services, Inc.**

**Ralph Evans, Ed.S.**

**Post Office Box 68, Hollister, North Carolina 27844**

**Phone (252) 257-4085 Fax: (252) 257-0345**

**ralph@educationalvision.com**

**www.educationalvision.com**