

DISTRICT PROFILE DATA

2007-2011

Hertford County Public Schools

Profile Data: EOG Proficiency (Grades 3-5)

Hertford County Public Schools -- 2007-2011

	<u>School Years</u>									
	2001- 2002	2002- 2003	2003- 2004	2004- 2005	2005- 2006	2006- 2007	2007- 2008	2008- 2009	2009- 2010	2010- 2011
Reading Grade 3	63.8	67.1	65	68.2	66.1	71.9	30.3			
Reading Grade 4	51.5	64.4	68.4	64.1	68.5	75.9	36			
Reading Grade 5	67.5	72.5	75.8	76.3	74.1	82.3	30.1			
Math Grade 3	59.9	81.3	75.6	71.4	43.5	48.2	51.7			
Math Grade 4	80.7	81.8	86.6	82.5	46.2	46.4	44.1			
Math Grade 5	79.5	84.4	84.7	80.7	42.4	52.3	44.4			

Notes

Source: Supplemental Dissaggregated Performance Data (DPI)

Profile Data: EOG Proficiency (Grades 6-8)

Hertford County Public Schools -- 2007-2011

	<u>School Years</u>									
	2001- 2002	2002- 2003	2003- 2004	2004- 2005	2005- 2006	2006- 2007	2007- 2008	2008- 2009	2009- 2010	2010- 2011
Reading Grade 6	51.3	61.2	57.3	70.6	72.2	72.5	37			
Reading Grade 7	55.9	65.9	72.1	66.4	76.5	76.2	29.3			
Reading Grade 8	66	76.5	73.6	79.5	72.8	79.3	26.8			
Math Grade 6	69.7	76.3	79	82.9	45.7	42.7	50.6			
Math Grade 7	71	64.2	66.9	70.4	37.2	40.8	46.8			
Math Grade 8	65.7	68.9	72.3	79.1	29.1	44.5	43.2			

Notes

Source: Supplemental Dissaggregated Performance Data (DPI)

Profile Data: EOG Proficiency (Grades 3-8 Composite)

Hertford County Public Schools -- 2007-2011

	<u>School Years</u>									
	2001- 2002	2002- 2003	2003- 2004	2004- 2005	2005- 2006	2006- 2007	2007- 2008	2008- 2009	2009- 2010	2010- 2011
Reading Grade 3-8 Composite	59.7	67.7	68.8	71.1	71.8	76.5	31.6			
Math Grade 3-8 Composite	71.1	76.3	77.3	77.8	40.5	45.8	47			
EOG Composite (Reading & Math) Grade 3-8 Composite		61.3	61.5	64.5	35.8	41.5	25.7			

Notes

Source: Supplemental Dissaggregated Performance Data (DPI)

Profile Data: EOC Proficiency (Grades 9-12)

Hertford County Public Schools -- 2007-2011

	<u>School Years</u>									
	2001- 2002	2002- 2003	2003- 2004	2004- 2005	2005- 2006	2006- 2007	2007- 2008	2008- 2009	2009- 2010	2010- 2011
Algebra I		52	51.1	47.9	54.8	36	44.4			
Algebra II		67.5	51.6	64.5	43.6	41.9	42.9			
Biology		32.9	26.9	33	24.8	49.8	58.1			
Chemistry		53.2	43.9	62.9	60		43.6			
Civics/Economics					27.4	25.9	44.1			
English 1		60.9	58	60.5	64.6	42.1	55.4			
Geometry		48.1	29.3	31.9	43.2	34.5	48.3			
History					26.5	29.5	31.9			
Physics			75		25		87.5			
Physical Science		92.7	23.7	46.2	40		42.1			
Math Grade 10		43.8	42.1	71.4	15.4	40	50			
Reading Grade 10		34.1	45.6	66.7	8.3					
EOC Composite		48.7	40	48.8	42.4		46			

Notes

Source: Supplemental Dissaggregated Performance Data (DPI)

Check on 2004-05 scores. They were on the 2003-2005 report, but not on the 2004-2006 report.

Profile Data: AYP Reading by Subgroup (Grades 3-8)

Hertford County Public Schools -- 2007-2011

	<u>School Years</u>									
	2001- 2002	2002- 2003	2003- 2004	2004- 2005	2005- 2006	2006- 2007	2007- 2008	2008- 2009	2009- 2010	2010- 2011
All students		67.9	68.8	71.6	71.6	75.8	31.5			
American Indian										
Asian										
Black		65.3	65.7	68.8	69.3	73	26.5			
Hispanic										
Multi-Racial										
White		80	83.2	84.3	81	89.1	52			
Free/Reduced Lunch		63.6	64	66	66.9	72.1	26.5			
Limited English Proficient										
Students with Disabilities		22.2	33.3	38.5	35.1	43.8	13.1			

Notes

Profile Data: AYP Math by Subgroup (Grades 3-8)

Hertford County Public Schools -- 2007-2011

	<u>School Years</u>									
	2001- 2002	2002- 2003	2003- 2004	2004- 2005	2005- 2006	2006- 2007	2007- 2008	2008- 2009	2009- 2010	2010- 2011
All students		76.4	77.5	78.4	40.2	44.7	47.4			
American Indian										
Asian										
Black		73.7	74.8	76.4	38.6	41.5	43.5			
Hispanic										
Multi-Racial										
White		89.9	90.3	86.9	55.7	58.4	63			
Free/Reduced Lunch		73	74.1	74.7	37.9	39.4	42.2			
Limited English Proficient										
Students with Disabilities		36.2	53	50.5	28.7	25.6	26			

Notes

Profile Data: AYP Reading by Subgroup (Grade 10)

Hertford County Public Schools -- 2007-2011

	<u>School Years</u>									
	2001- 2002	2002- 2003	2003- 2004	2004- 2005	2005- 2006	2006- 2007	2007- 2008	2008- 2009	2009- 2010	2010- 2011
All students		34.5	46.1	30.4	35	33.5	29.8			
American Indian										
Asian										
Black		31.6	41	27.6	31	29.5	26.4			
Hispanic										
Multi-Racial										
White			71.4		54.8	45.8				
Free/Reduced Lunch		32.7	36.1	28.1	30.2	26.1	27.5			
Limited English Proficient										
Students with Disabilities					9.8					

Notes

Profile Data: AYP Math by Subgroup (Grade 10)

Hertford County Public Schools -- 2007-2011

	<u>School Years</u>									
	2001- 2002	2002- 2003	2003- 2004	2004- 2005	2005- 2006	2006- 2007	2007- 2008	2008- 2009	2009- 2010	2010- 2011
All students		44.3	42.6	60.2	54.1	64.7	31.9			
American Indian										
Asian										
Black		39.6	36.9	57.5	51	61.3	28.9			
Hispanic										
Multi-Racial										
White			69		71.4	76.6				
Free/Reduced Lunch		41.5	35.3	62.6	54.5	57.4	26.8			
Limited English Proficient										
Students with Disabilities					27.9					

Notes

Profile Data: SAT Performance

Hertford County Public Schools -- 2007-2011

	<u>School Years</u>									
	2001- 2002	2002- 2003	2003- 2004	2004- 2005	2005- 2006	2006- 2007	2007- 2008	2008- 2009	2009- 2010	2010- 2011
Hertford County										
% Tested	58.4	55.2	52.3	50.5	46.4	48.2	43.7			
Math Avg Score	409	407	419	413	417	415	426			
Verbal/CR Avg Score	399	392	405	395	408	407	408			
Writing					402	401	396			
M+Verbal/CR	808	799	824	808	825	822	834			
M+V/CR+W					1227	1223	1230			
North Carolina										
% Tested	67	68	70	74	71	71	63			
Math Avg Score	505	506	507	511	513	509	511			
Verbal/CR Avg Score	493	495	499	499	495	495	496			
Writing					485	482	482			
M+Verbal/CR	998	1001	1006	1010	1008	1004	1007			
M+V/CR+W					1493	1486	1489			
United States										
% Tested	46	48	48	49	48	48	45			
Math Avg Score	516	519	518	520	518	515	515			
Verbal/CR Avg Score	504	507	508	508	503	502	502			
Writing					497	494	494			
M+Verbal/CR	1020	1026	1026	1028	1021	1017	1017			
M+V/CR+W					1518	1511	1511			

Profile Data: Other High School Data

Hertford County Public Schools -- 2007-2011

		<u>School Years</u>									
		2001- 2002	2002- 2003	2003- 2004	2004- 2005	2005- 2006	2006- 2007	2007- 2008	2008- 2009	2009- 2010	2010- 2011
Graduation Rate											
4-Year Cohort						48.9	68.9	62.1			
5-Year Cohort							57.2	72.8			
Dropout Rate											
		4.6	4.1	2.9	3.7	3.9	2.1	2			

Notes

Source

Graduation Rate: AYP Graduation Rate Report

Dropout Rate: Dropout Data Reports 2001-02 and 2007-08 (Grades 7-12)

Profile Data: 21st Century Professionals

Hertford County Public Schools -- 2007-2011

	<u>School Years</u>									
	2001- 2002	2002- 2003	2003- 2004	2004- 2005	2005- 2006	2006- 2007	2007- 2008	2008- 2009	2009- 2010	2010- 2011
% Fully Licensed Teachers										
Elementary	78	78	82	90	86	91	92			
Middle	43	56	59	75	78	76	72			
High	61	70	69	78	73	82	77			
Overall										
% Classes Taught by HQ Teachers										
Elementary		93	73	85	92	96	99			
Middle		62	81	82	84	97	97			
High		86	85	86	87	87	87			
Overall										
% Teachers With Advanced Degrees										
Elementary	22	20	16	16	18	20	22			
Middle	9	14	15	9	14	16	15			
High	9	13	13	12	7	8	11			
Overall										

	<u>School Years</u>									
	2001- 2002	2002- 2003	2003- 2004	2004- 2005	2005- 2006	2006- 2007	2007- 2008	2008- 2009	2009- 2010	2010- 2011
Avg # National Board Certified Teachers										
Elementary	1	1	3	4	3	8	6			
Middle	0	0	0	0	1	1	1			
High	0	0	0	1	1	2	1			
Overall										

Teacher Turnover Rate

Elementary	23	18	16	31	15	15	15
Middle	35	21	23	54	20	32	16
High	30	28	25	25	22	28	28
Overall	30.6	18.8	17.5	16.5	15.4	18	16.6

Notes

Source: District Report Card

Overall Teacher Turnover Rate Source: 2003-04 and 2007-08 Teacher Turnover Reports Five-Year Average Section.

Appendix

Hertford County Public Schools

2008-2011 District Improvement Plan Targets

Objective 1.1: By the end of the 2010-2011 school year students will meet Adequate Yearly Progress (AYP) by meeting the following annual proficiency targets:

Reading Percent Proficient	2008-09	2009-10	2010-11
Grade 3	44.1	57.8	71.6
Grade 4	47.9	59.7	71.6
Grade 5	43.9	57.8	71.6
Grade 6	48.5	60.1	71.6
Grade 7	43.4	57.5	71.6
Grade 8	41.7	56.7	71.6
Grade 10	56.3	52.8	69.3

Math Percent Proficient	2008-09	2009-10	2010-11
Grade 3	70.6	79.6	88.6
Grade 4	71.6	80.1	88.6
Grade 5	70.1	79.4	88.6
Grade 6	71.4	80.0	88.6
Grade 7	68.0	78.3	88.6
Grade 8	64.8	76.7	88.6
Grade 10	76.2	80.2	84.2

Objective 1.2: By the end of the 2010-11 school year 85% of students will demonstrate proficiency in End-of-Course subjects by meeting the following annual proficiency targets

EOC Percent Proficient	2008-09	2009-10	2010-11
Algebra 1 (All)	78.0	81.5	85.0
Algebra 1 (MS)	89.1	89.5	85.0
Algebra 1 (HS)	74.2	79.6	85.0
Algebra 2	77.8	81.4	85.0
Biology	74.1	79.5	85.0
Chemistry	70.0	77.5	85.0
Civics/Economics	61.2	72.4	85.0
English	75.9	80.5	85.0
Geometry	72.6	78.8	85.0
History	61.1	72.6	85.0
Physical Science	71.6	78.3	85.0
Physics	82.1	83.6	85.0

Hertford County Public Schools

2008-2011 District Improvement Plan Targets

Objective 1.3: By the end of the 2010-11 school year 85% of students will master grade level proficiency in writing skills by meeting the following interim annual proficiency targets

Writing Percent Proficient	2008-09	2009-10	2010-11
Grade 4	64.8	74.9	85.0
Grade 7	68.6	76.8	85.0
Grade 10	71.4	78.2	85.0

Objective 1.4: By the end of the 2010-11 school year, at least 80% the percent of students will graduate from high school within four years of entering ninth grade (2006-07 baseline data 68.9%) by meeting the following annual targets

Graduation Cohort Rate	2008-09	2009-10	2010-11
4-Year	68.0	74.4	80.0
5-Year	71.1	78.1	85.0

Objective 1.5: By the end of the 2010-11 school year 85% of students in grades eight, and 95% students in grade twelve, will have passed all portions of the Test of Computer Skills by meeting the following annual targets:

Percent Proficient	2008-09	2009-10	2010-11
Grade 8	77.4	81.2	85.0
Grade 12	94.2	94.6	95.0

Objective 1.6: By the end of the 2008-09 school year, and each year thereafter, the average student SAT score will increase by 2.5% (approximately 20 points per year) while maintaining at least a 50% participation rate. [2007-08 baseline 834]

Average Score	2008-09	2009-10	2010-11
M+CR	854	874	894
M+CR+W	1254	1274	1294

Hertford County Public Schools

2008-2011 District Improvement Plan Targets

Objective 1.7: By the end of the 2010-11 school year students completing the K-2 curriculum will demonstrate proficiency in Reading and Math on the Grade 3 Pre-Test by meeting the following annual proficiency targets in the next school year:

Percent Proficient Grade 3 Pre	2009-10	2010-11	2011-12
Reading	33.2	52.4	71.6
Math	70.6	79.6	88.6

Objective 2.1: By the end of the 2010-11 school year the system will have employed high quality personnel by meeting state standards with the following annual targets.

% Fully Licensed	2008-09	2009-10	2010-11
Elementary School	90.8	92.7	94.5
Middle School	76.3	81.0	85.8
High School	83.8	87.0	90.3

% Classes - HQ Teachers	2008-09	2009-10	2010-11
Elementary School	96.8	97.5	98.1
Middle School	82.7	86.2	89.6
High School	93.6	94.9	96.2

% Teachers with Adv Degrees	2008-09	2009-10	2010-11
Elementary School	28.2	29.1	30.0
Middle School	25.3	27.7	30.0
High School	25.3	27.7	30.0

Objective 2.2: By the end of the 2009-10 school year, and each year thereafter, 100% of education professionals will participate in high quality professional development as described in the professional learning plan developed in objective 5.3.

Targets	2008-09	2009-10	2010-11
	100.0	100.0	100.0

Hertford County Public Schools

2008-2011 District Improvement Plan Targets

Objective 2.3: By the end of the 2010-11 school year the teacher turnover rate will be reduced to the 2007-08 5-year statewide average of 12.8% by meeting the following annual targets:

Teacher Turnover Targets

2008-09	2009-10	2010-11
16.8	14.8	12.8

Objective 3.1: By June 2009, and each year thereafter, provide a safe and caring educational environment and adequate facilities that support a culture for high student performance measured by surveys of students, staff, and parents as documented in district and individual safe schools plans.

District Priorities
(School Priorities for SIP)

2008-09	2009-10	2010-11
Bullying		TBD
Adult/Student Respect		TBD
Student Behavior		TBD
Student Input in Decisions		TBD

Objective 3.2: By June 2009, and each year thereafter, every school will promote a healthy, active lifestyle where students are encouraged to make responsible choices as documented in individual healthy schools plans.

Targets

2008-09	2009-10	2010-11
Plan Review / Feedback	Plan Review / Feedback	Plan Review / Feedback

Objective 3.3: By June 2009, and each year thereafter, every school will focus on developing strong student character, personal responsibility, and community/world involvement as documented in individual school character education plans.

Targets

2008-09	2009-10	2010-11
Plan Review / Feedback	Plan Review / Feedback	Plan Review / Feedback

Hertford County Public Schools

2008-2011 District Improvement Plan Targets

Objective 4.1: By June 2010, and each year thereafter, the district and each school will provide evidence that its professionals have implemented at least two new 21st Century learning best practices.

Targets

2008-09	2009-10	2010-11
Identify 2 for DIP/SIP	2 New TCL BPs	4 New TCL BPs

Objective 4.2: By August 2009, and each year thereafter, school system leaders will continue developing a culture of continuous improvement by focusing on the district's vision, purpose and the achievement of its improvement goals/objectives as evidenced by monitoring the district and individual school improvement plans.

Targets

2008-09	2009-10	2010-11
Data Analysis / Review / Revise	Data Analysis / Review / Revise	Data Analysis / Review / Revise

Objective 5.1: By June of 2011 develop a process to systematically monitor district and school strategic plans for impact and effectiveness of initiatives in order to reflect and realign as needed to meet quality standards.
Phase 1 [June 2009], Phase 2 [June 2010], Phase 3 [June 2011]

Targets

2008-09	2009-10	2010-11
Phase 1 Document	Phases 1-2 Document	Phases 1-3 Document

Objective 5.2: By August 2009 develop and annually update a communication plan that identifies processes and procedures for communicating to both internal and external publics.

Targets

2008-09	2009-10	2010-11
Communication Plan Document	Data Analysis / Review / Revise	Data Analysis / Review / Revise

Hertford County Public Schools

2008-2011 District Improvement Plan Targets

Objective 5.3: By April 2009 develop and annually update a strategic performance improvement professional learning plan that enables system personnel to successfully implement both school and district strategic plans.

Targets

2008-09	2009-10	2010-11
Learning Plan Document	Data Analysis / Review / Revise	Data Analysis / Review / Revise

Objective 5.4: By June of 2011 develop a process to systematically monitor district and school operations for impact and effectiveness of initiatives for the following areas:
 -Child nutrition
 -Maintenance
 -Transportation

Targets

2008-09	2009-10	2010-11
Child Nutrition	Maintenance	Transportation

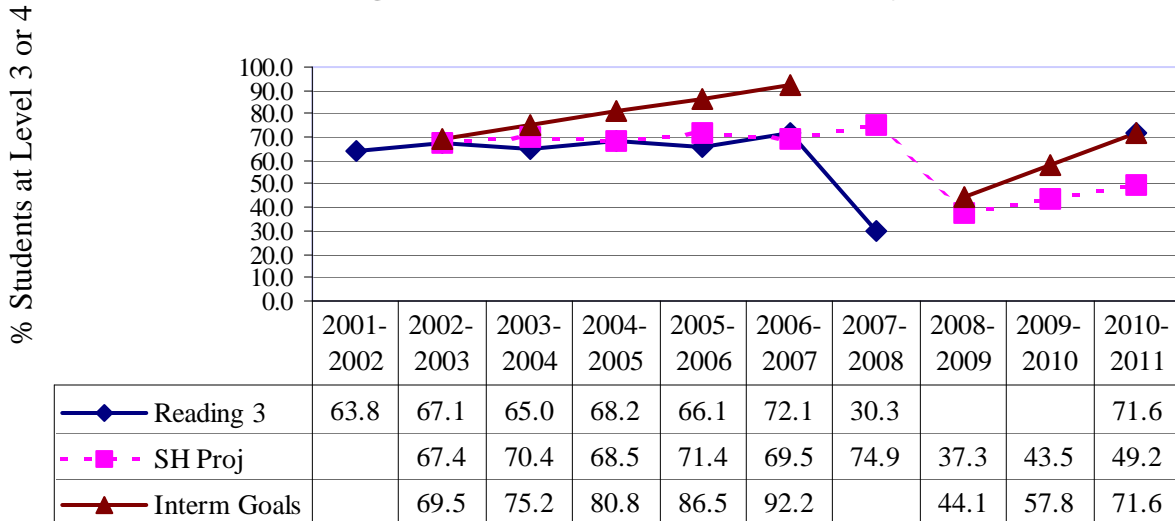
Objective 5.5: By June of 2011 develop a process to systematically monitor district and school operations for impact and effectiveness of initiatives for finance/purchasing.

Targets

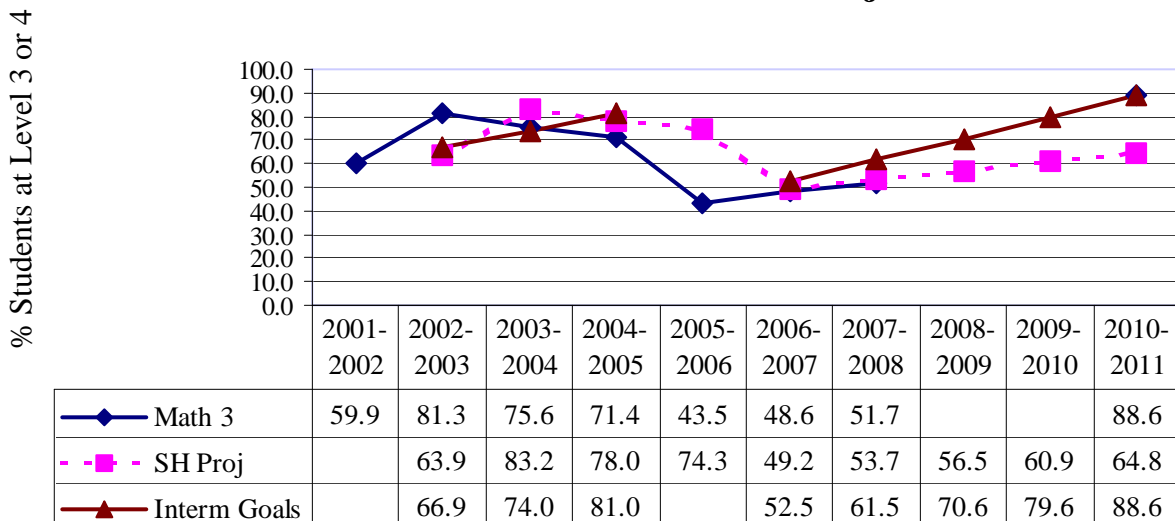
2008-09	2009-10	2010-11
Data Analysis / Review	Phase 1 Document	Phase 2 Document

Hertford County Public Schools

Third Grade: Ten-Year Trend EOG Reading and Current Safe Harbor Projections



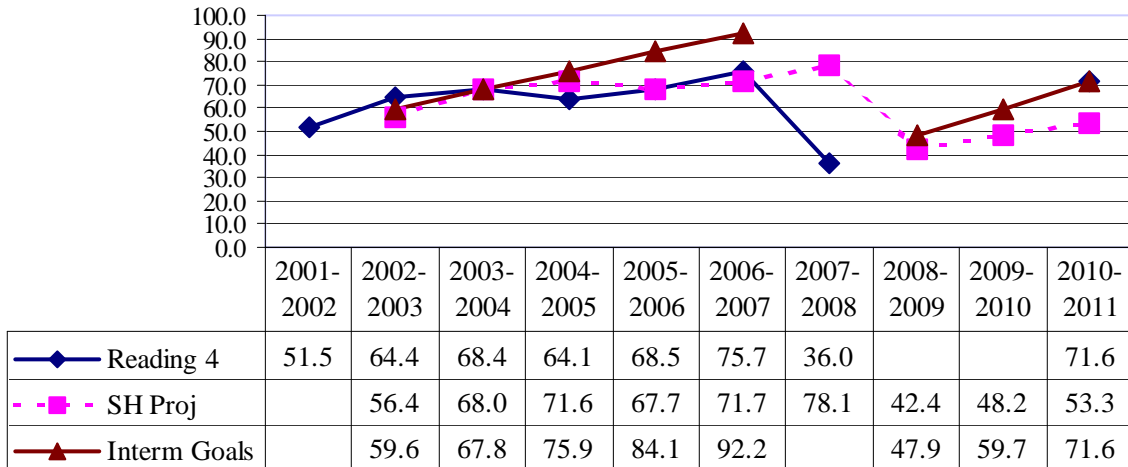
Third Grade: Ten-Year Trend EOG Math and Current Safe Harbor Projections



- Safe harbor trends reflect a reduction in the percent of students NOT proficient by 10% from the preceding year for the subject area.
- The subgroup still must meet other requirements to qualify for safe harbor, such as, 95% participation and progress on the Other Academic Indicators (OAI)
- Since safe harbor trends are based on the preceding year percent proficient, they may change each year.

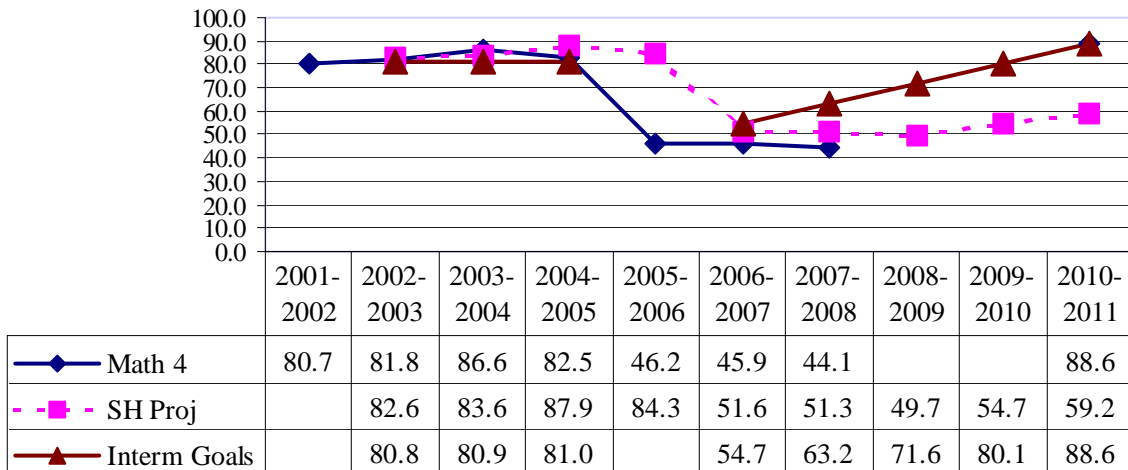
Fourth Grade: Ten-Year Trend EOG Reading and Current Safe Harbor Projections

% Students at Level 3 or 4



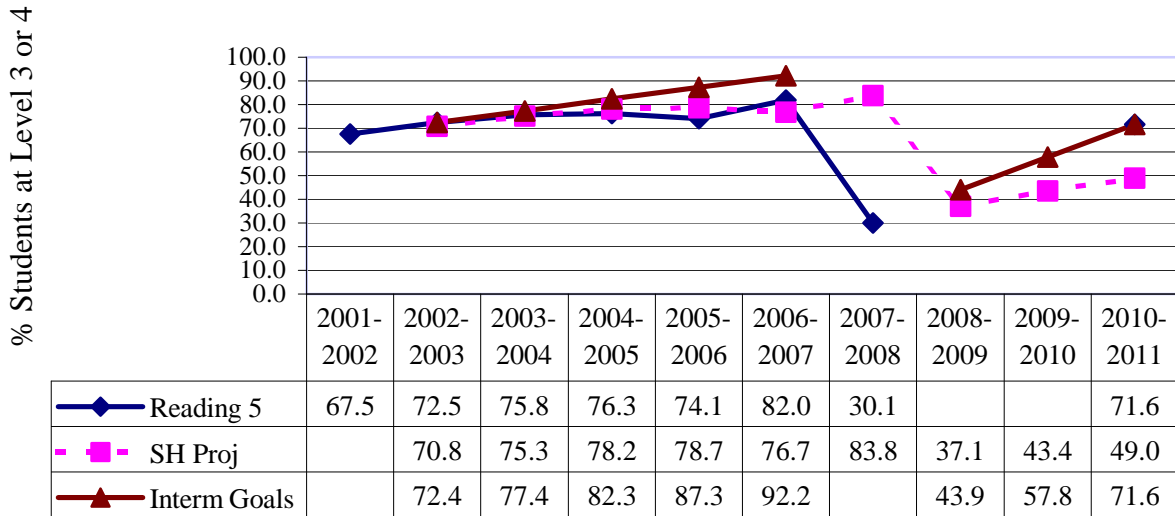
Fourth Grade: Ten-Year Trend EOG Math and Current Safe Harbor Projections

% Students at Level 3 or 4

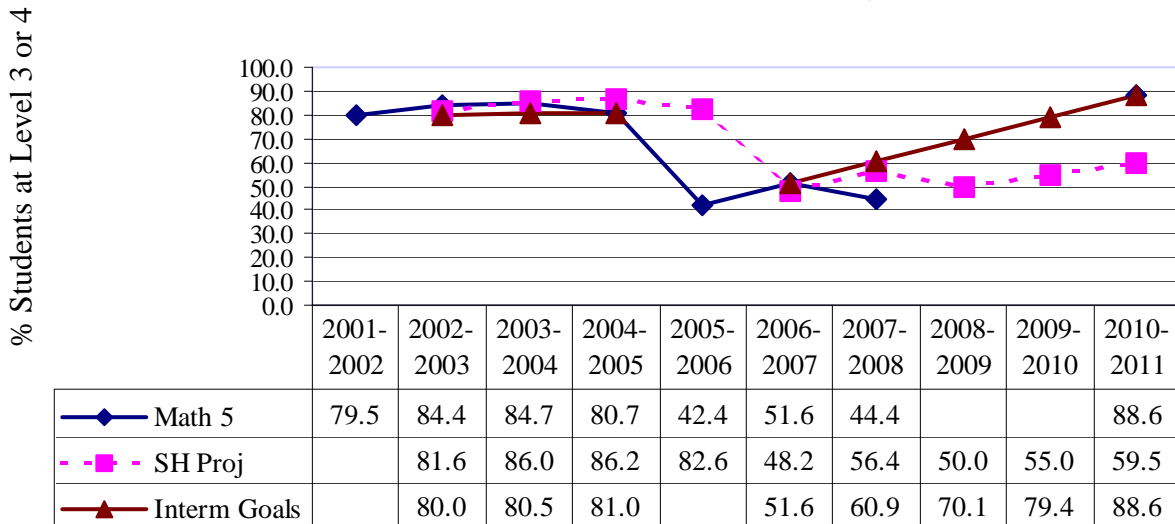


- Safe harbor trends reflect a reduction in the percent of students NOT proficient by 10% from the preceding year for the subject area.
- The subgroup still must meet other requirements to qualify for safe harbor, such as, 95% participation and progress on the Other Academic Indicators (OAI)
- Since safe harbor trends are based on the preceding year percent proficient, they may change each year.

Fifth Grade: Ten-Year Trend EOG Reading and Current Safe Harbor Projections

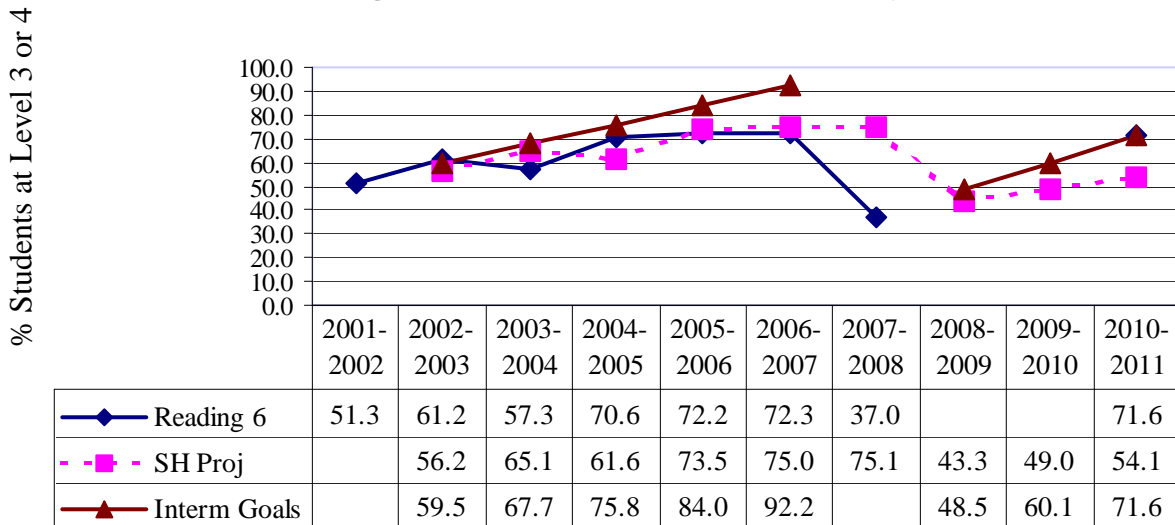


Fifth Grade: Ten-Year Trend EOG Math and Current Safe Harbor Projections

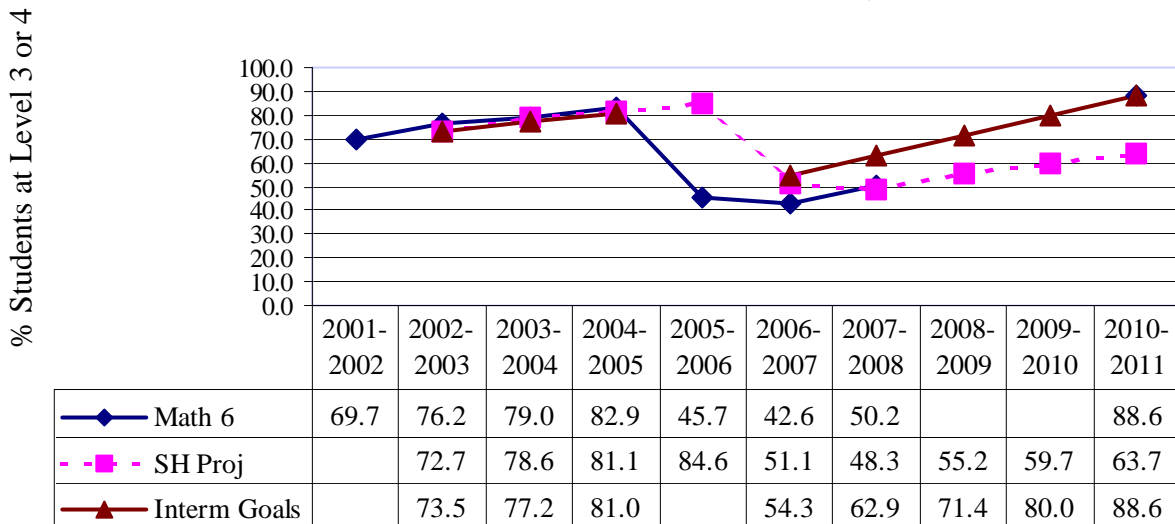


- Safe harbor trends reflect a reduction in the percent of students NOT proficient by 10% from the preceding year for the subject area.
- The subgroup still must meet other requirements to qualify for safe harbor, such as, 95% participation and progress on the Other Academic Indicators (OAI)
- Since safe harbor trends are based on the preceding year percent proficient, they may change each year.

Sixth Grade: Ten-Year Trend EOG Reading and Current Safe Harbor Projections

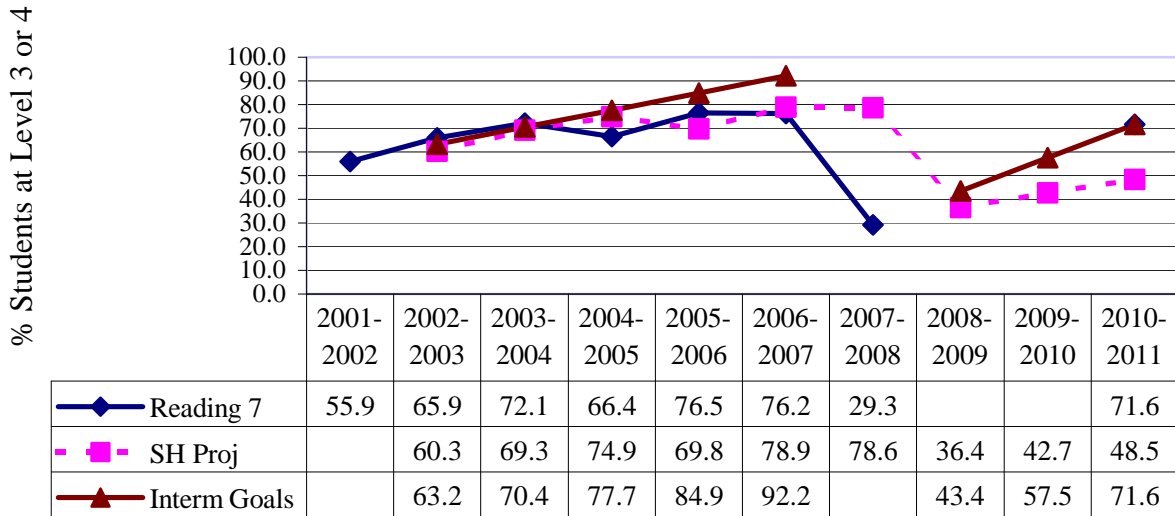


Sixth Grade: Ten-Year Trend EOG Math and Current Safe Harbor Projections

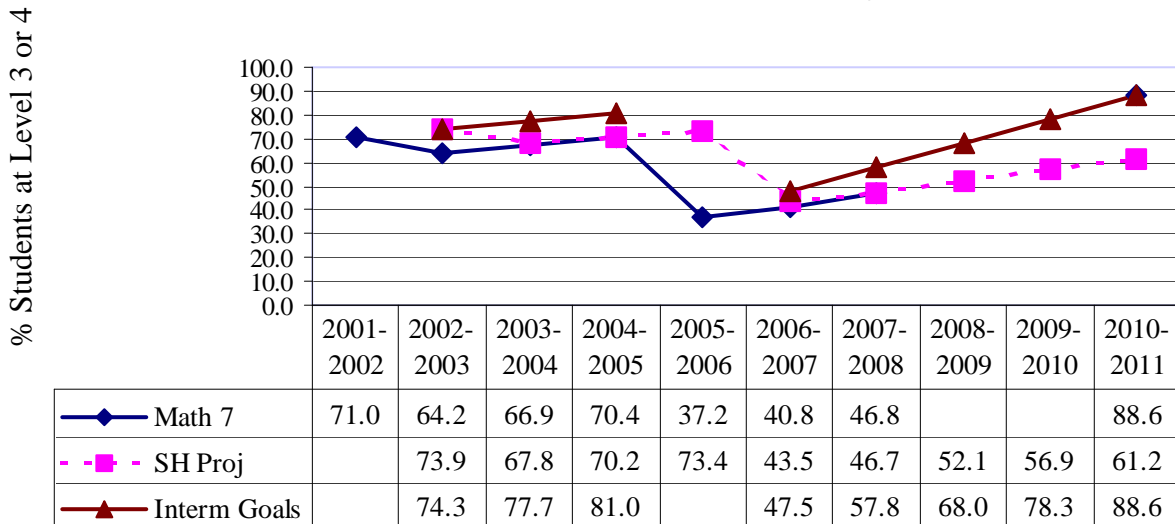


- Safe harbor trends reflect a reduction in the percent of students NOT proficient by 10% from the preceding year for the subject area.
- The subgroup still must meet other requirements to qualify for safe harbor, such as, 95% participation and progress on the Other Academic Indicators (OAI)
- Since safe harbor trends are based on the preceding year percent proficient, they may change each year.

Seventh Grade: Ten-Year Trend EOG Reading and Current Safe Harbor Projections

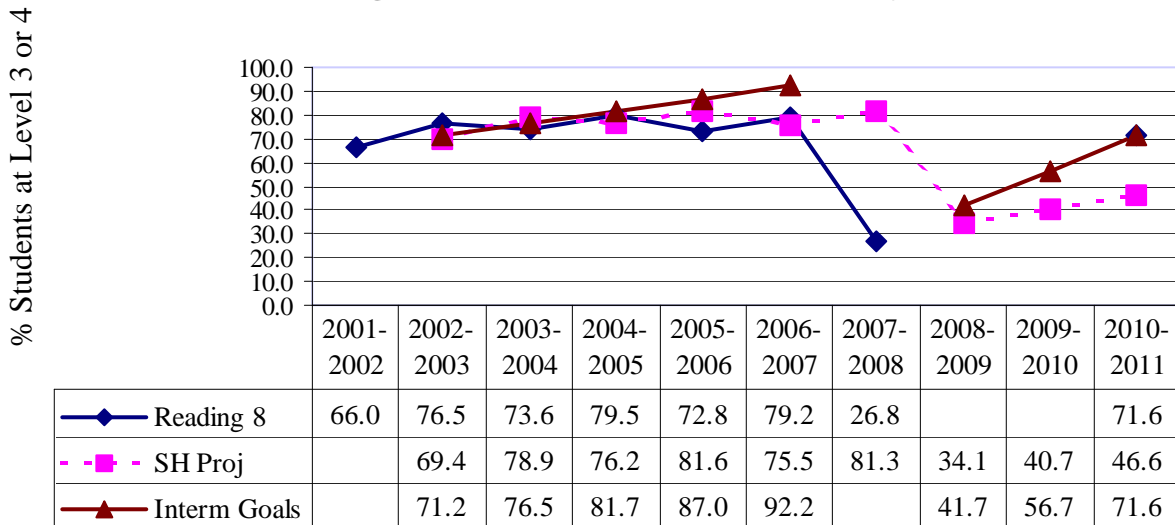


Seventh Grade: Ten-Year Trend EOG Math and Current Safe Harbor Projections

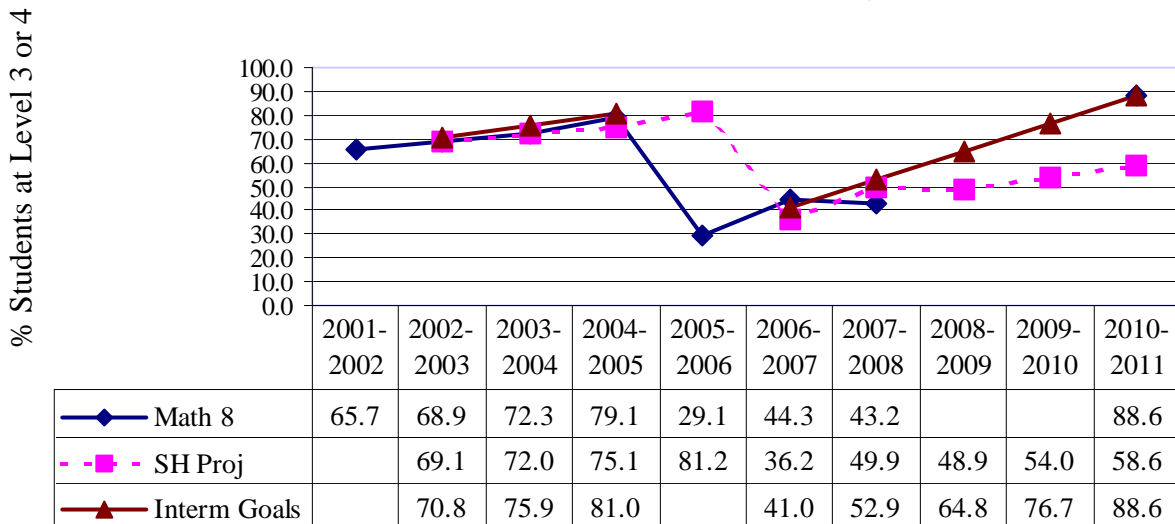


- Safe harbor trends reflect a reduction in the percent of students NOT proficient by 10% from the preceding year for the subject area.
- The subgroup still must meet other requirements to qualify for safe harbor, such as, 95% participation and progress on the Other Academic Indicators (OAI)
- Since safe harbor trends are based on the preceding year percent proficient, they may change each year.

Eighth Grade: Ten-Year Trend EOG Reading and Current Safe Harbor Projections



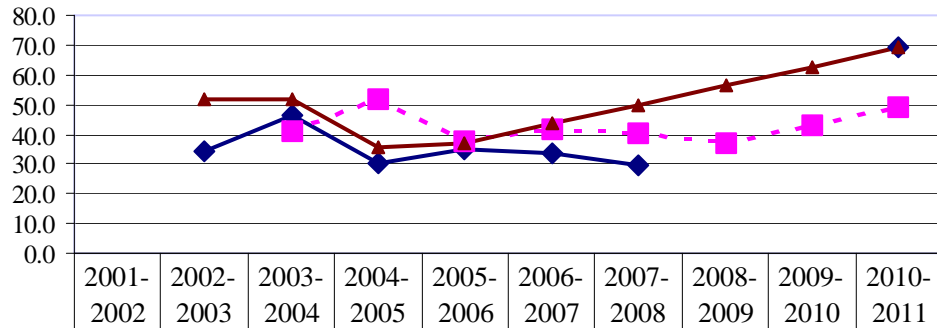
Eighth Grade: Ten-Year Trend EOG Math and Current Safe Harbor Projections



- Safe harbor trends reflect a reduction in the percent of students NOT proficient by 10% from the preceding year for the subject area.
- The subgroup still must meet other requirements to qualify for safe harbor, such as, 95% participation and progress on the Other Academic Indicators (OAI)
- Since safe harbor trends are based on the preceding year percent proficient, they may change each year.

Tenth Grade: Ten-Year Trend EOG Reading and Current Safe Harbor Projections

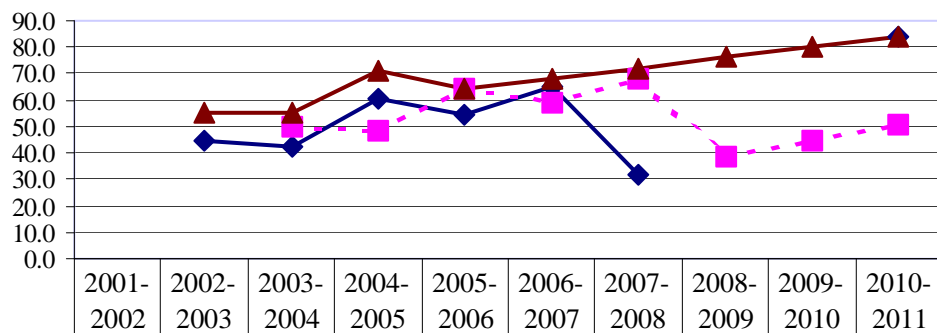
% Students at Level 3 or 4



◆ Reading 10		34.5	46.1	30.4	35.0	33.5	29.8			69.3
■ SH Proj			41.1	51.5	37.4	41.5	40.2	36.8	43.1	48.8
▲ Interm Goals		52.0	52.0	35.4	36.9	43.4	49.9	56.3	62.8	69.3

Tenth Grade: Ten-Year Trend EOG Math and Current Safe Harbor Projections

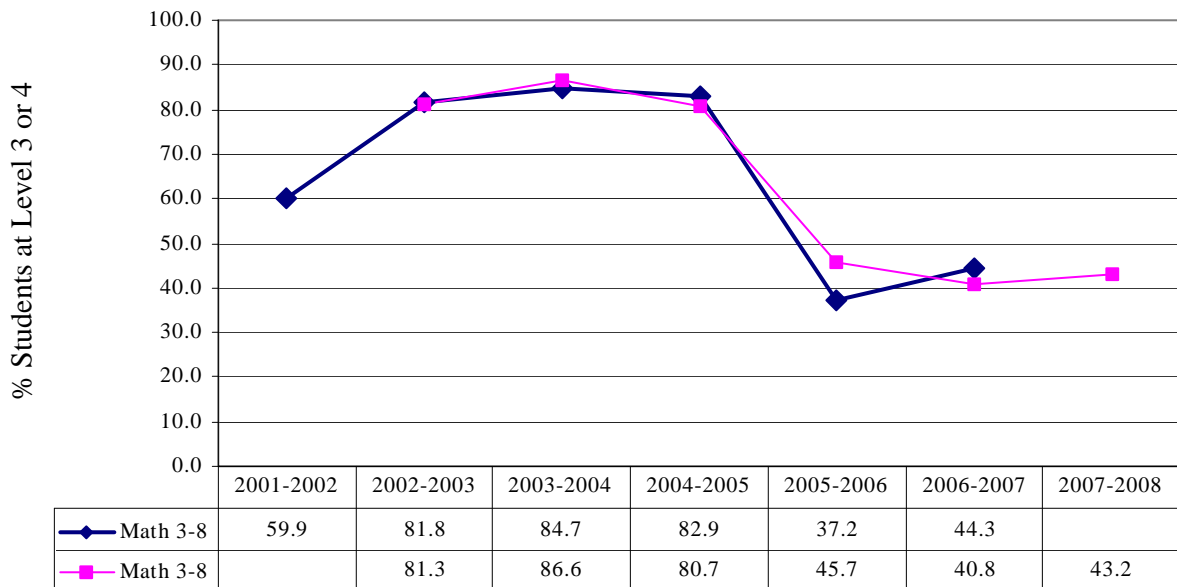
% Students at Level 3 or 4



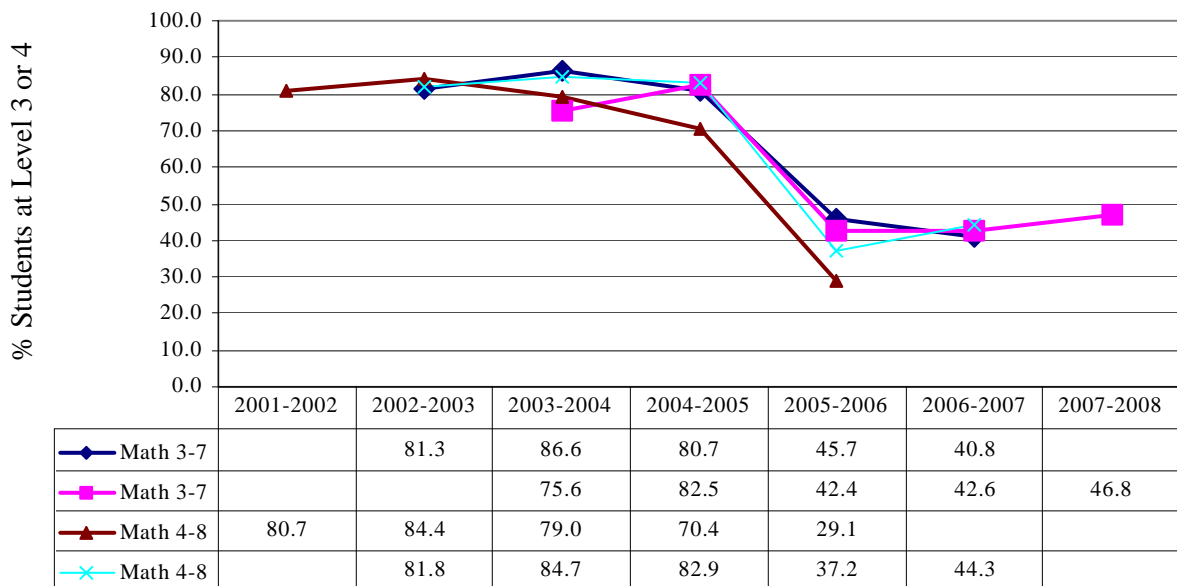
◆ Math 10		44.3	42.6	60.2	54.1	64.7	31.9			84.2
■ SH Proj			49.9	48.3	64.2	58.7	68.2	38.7	44.8	50.4
▲ Interm Goals		54.9	54.9	70.8	64.2	68.2	72.2	76.2	80.2	84.2

- Safe harbor trends reflect a reduction in the percent of students NOT proficient by 10% from the preceding year for the subject area.
- The subgroup still must meet other requirements to qualify for safe harbor, such as, 95% participation and progress on the Other Academic Indicators (OAI)
- Since safe harbor trends are based on the preceding year percent proficient, they may change each year.

Six Year EOG Math Cohorts 2001-2008

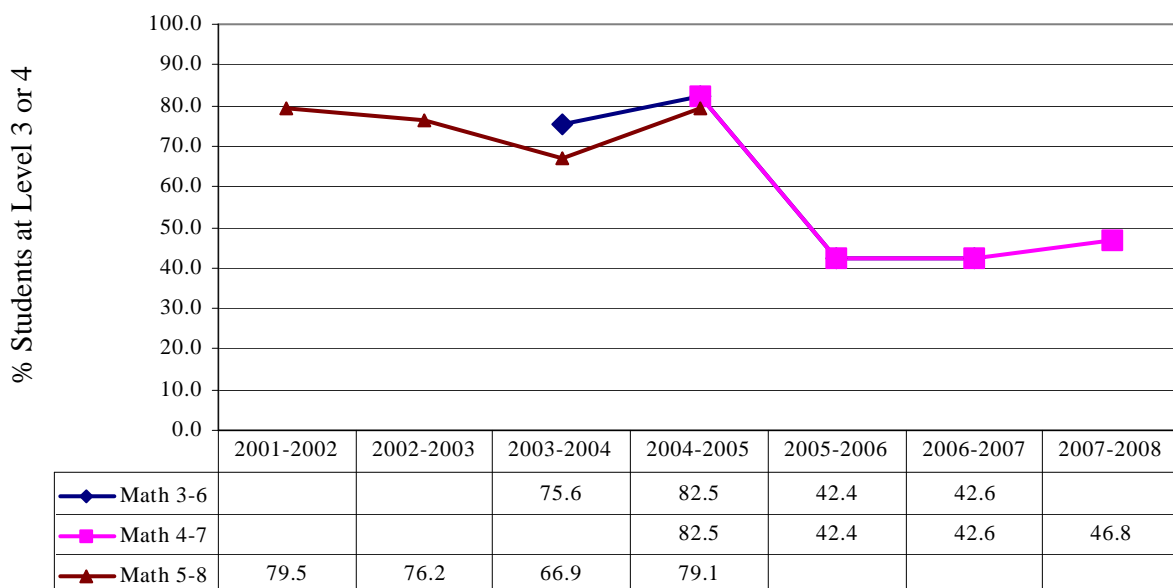


Five Year EOG Math Cohorts 2001-2008



- Safe harbor trends reflect a reduction in the percent of students NOT proficient by 10% from the preceding year for the subject area.
- The subgroup still must meet other requirements to qualify for safe harbor, such as, 95% participation and progress on the Other Academic Indicators (OAI)
- Since safe harbor trends are based on the preceding year percent proficient, they may change each year.

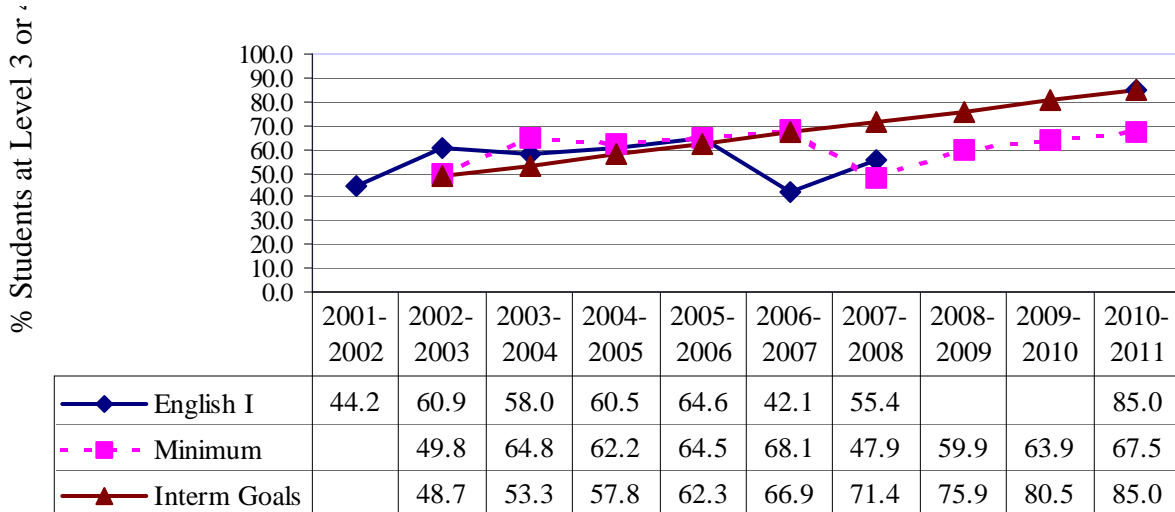
Four Year EOG Math Cohorts 2001-2008



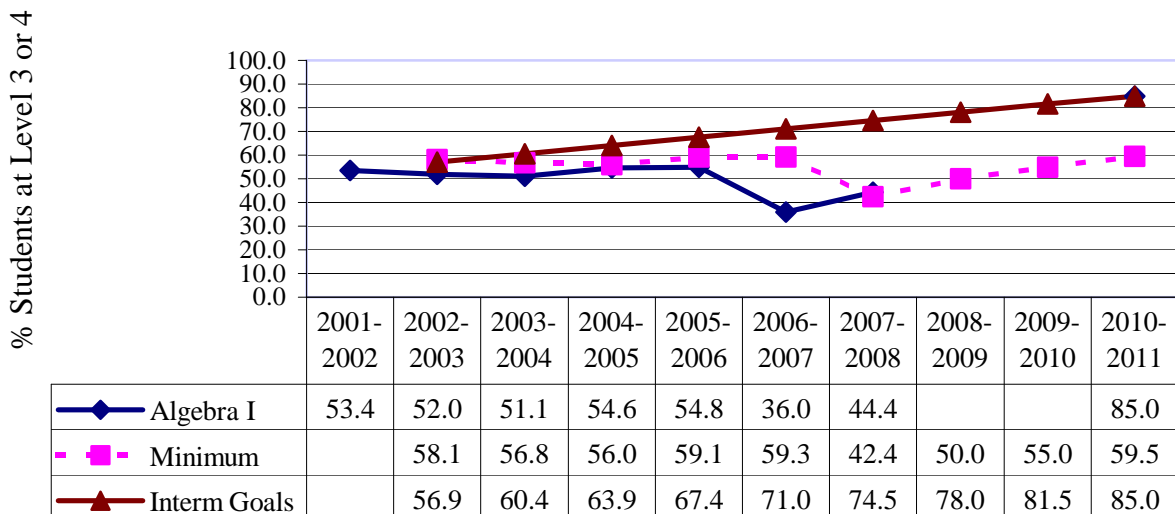
- Safe harbor trends reflect a reduction in the percent of students NOT proficient by 10% from the preceding year for the subject area.
- The subgroup still must meet other requirements to qualify for safe harbor, such as, 95% participation and progress on the Other Academic Indicators (OAI)
- Since safe harbor trends are based on the preceding year percent proficient, they may change each year.

Hertford County Schools

English I: Ten-Year Trend Current Minimum Recommended Projections



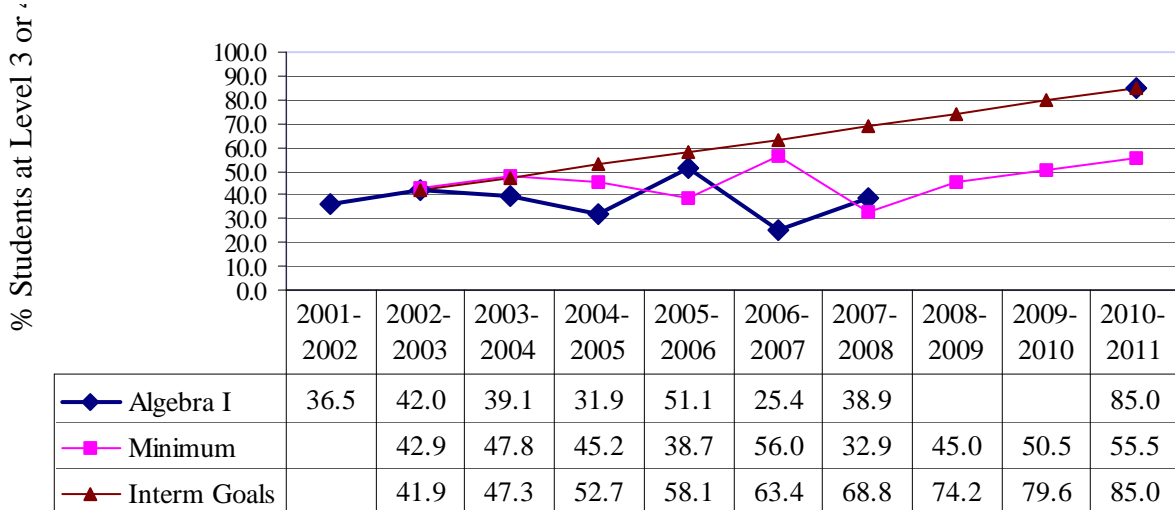
Algebra I: Ten-Year Trend (All) Current Minimum Recommended Projections



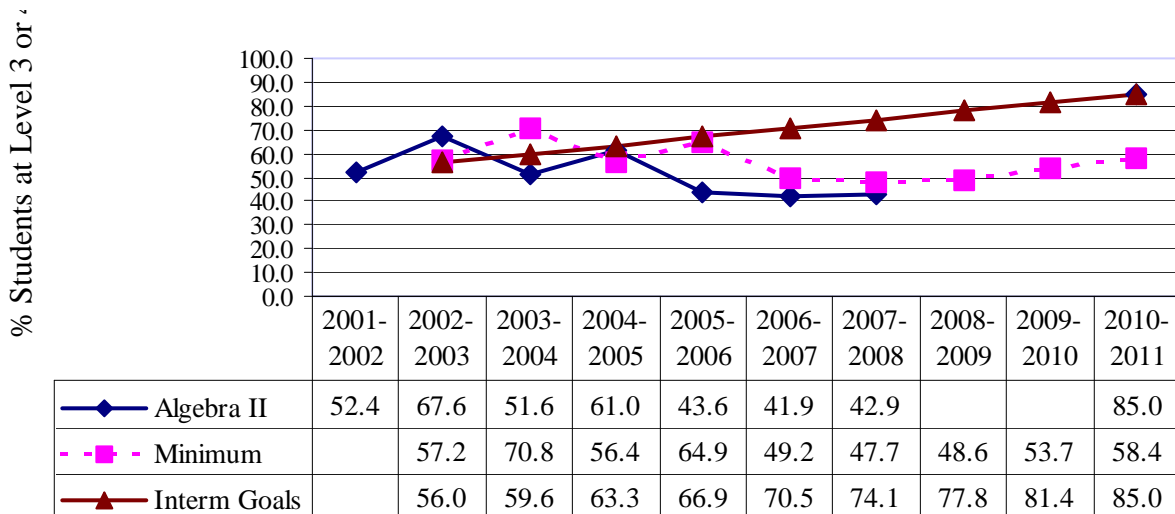
Minimum recommended trends reflect a reduction in the percent of students **NOT** proficient by 10% from the preceding year for the subject area similar to AYP safe harbor.

This is a planning tool only!

Algebra I: Ten-Year Trend (HS Only) Current Minimum Recommended Projections



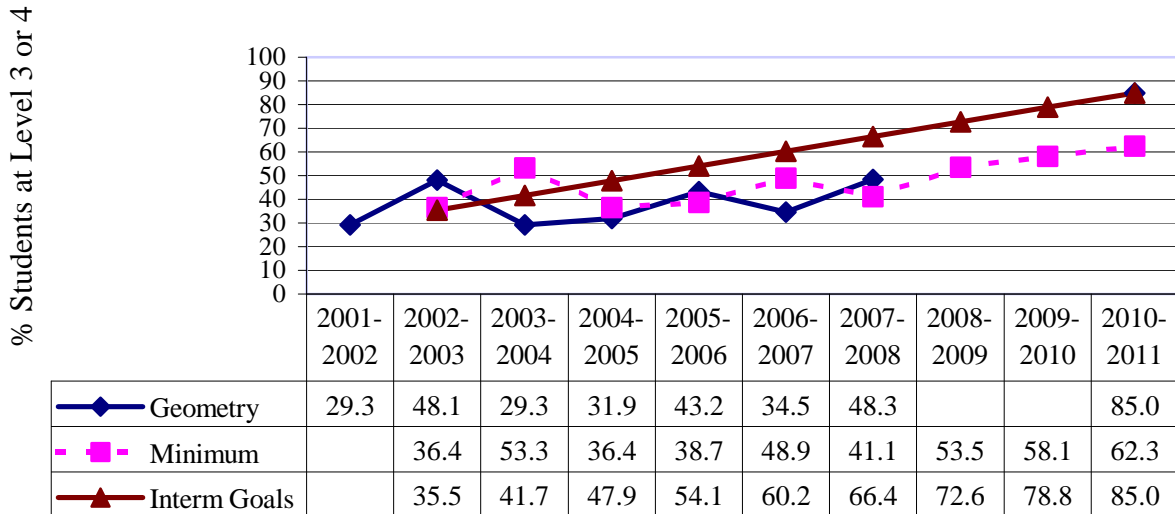
Algebra II: Ten-Year Trend Current Minimum Recommended Projections



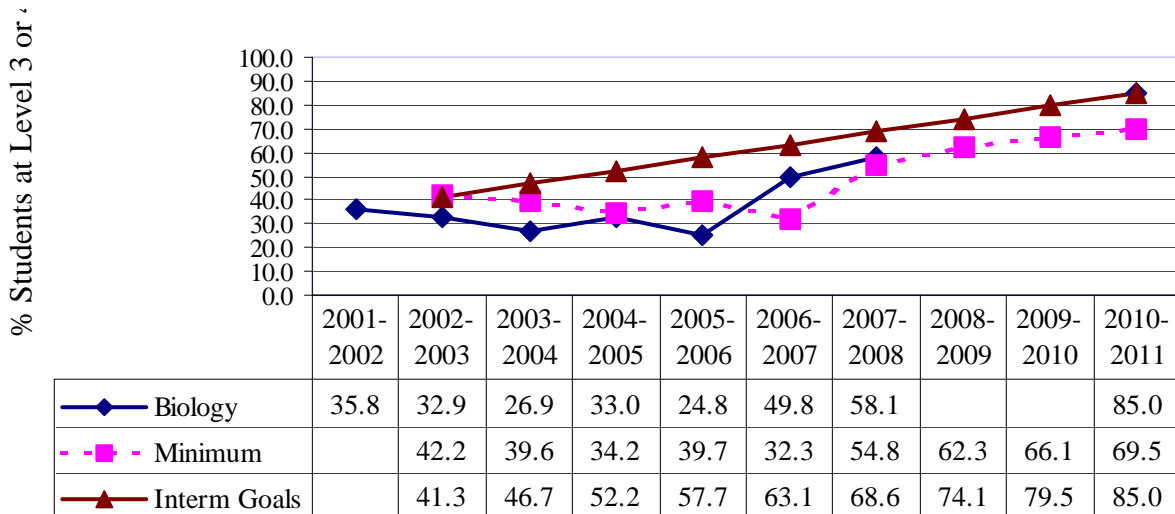
Minimum recommended trends reflect a reduction in the percent of students **NOT** proficient by 10% from the preceding year for the subject area similar to AYP safe harbor.

This is a planning tool only!

Geometry: Ten-Year Trend Current Minimum Recommended Projections



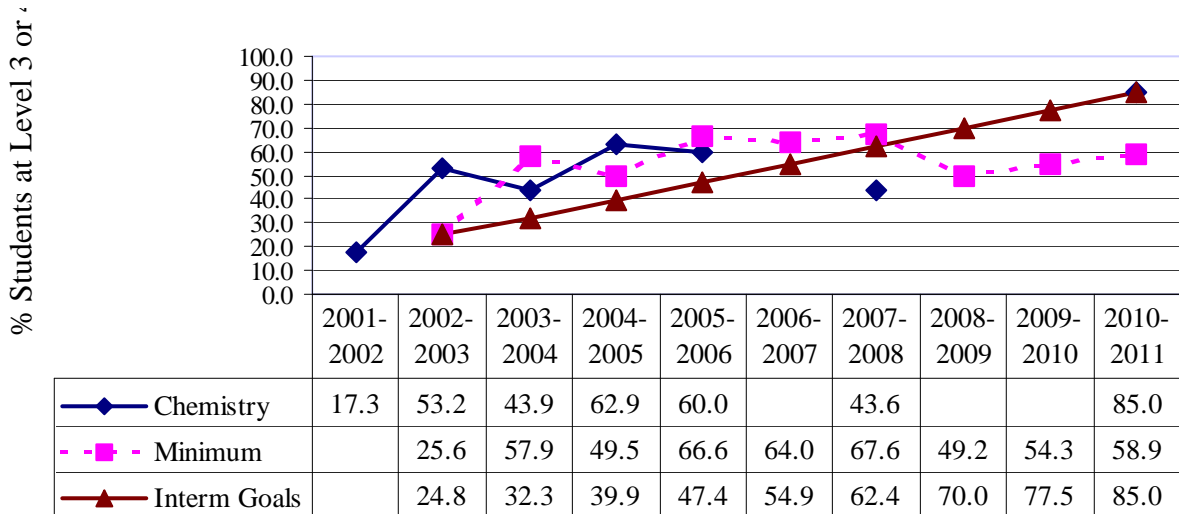
Biology: Ten-Year Trend Current Minimum Recommended Projections



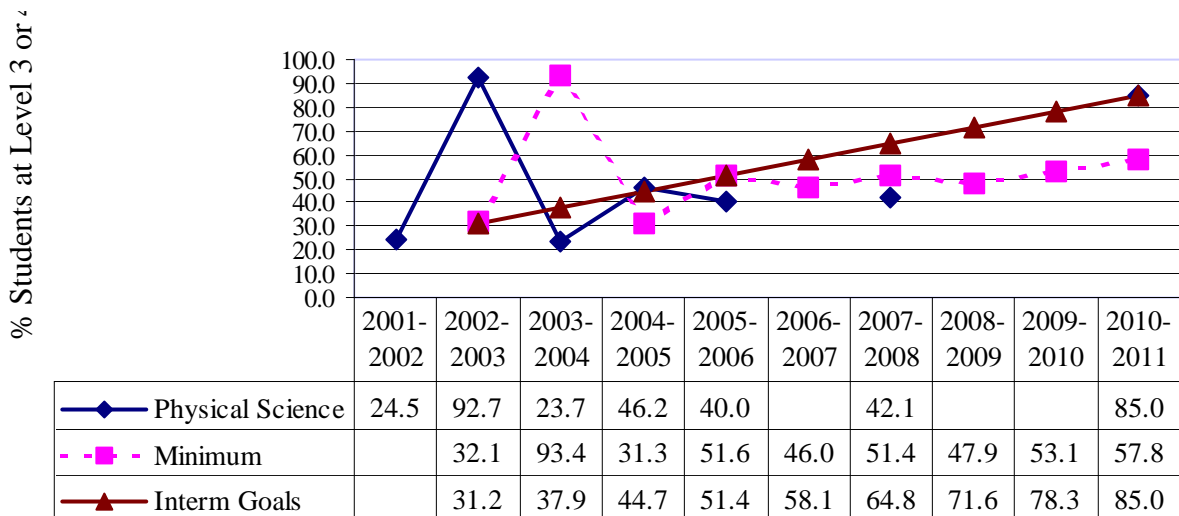
Minimum recommended trends reflect a reduction in the percent of students **NOT** proficient by 10% from the preceding year for the subject area similar to AYP safe harbor.

This is a planning tool only!

Chemistry: Ten-Year Trend Current Minimum Recommended Projections



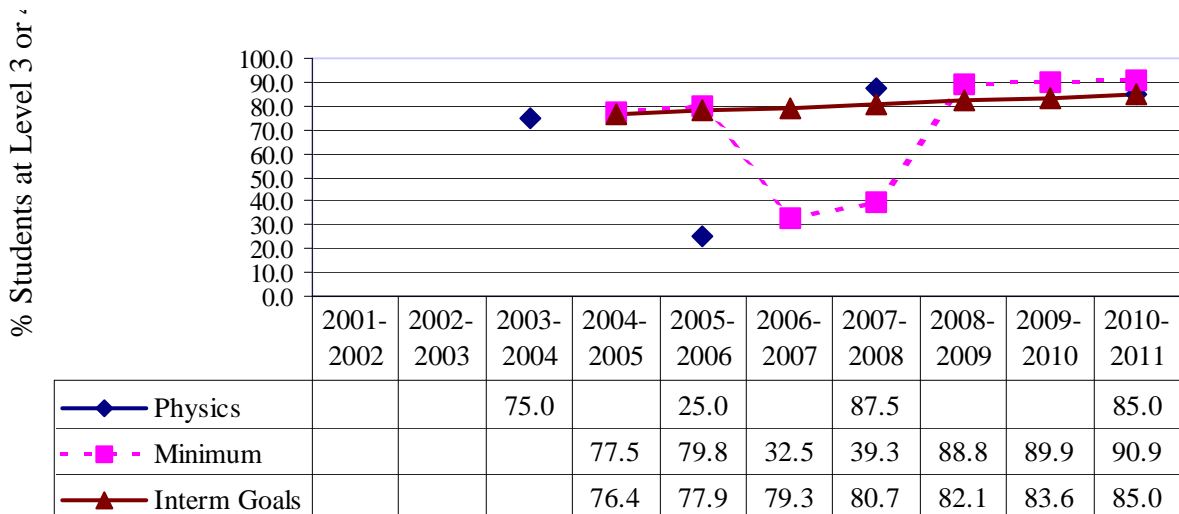
Physical Science: Ten-Year Trend Current Minimum Recommended Projections



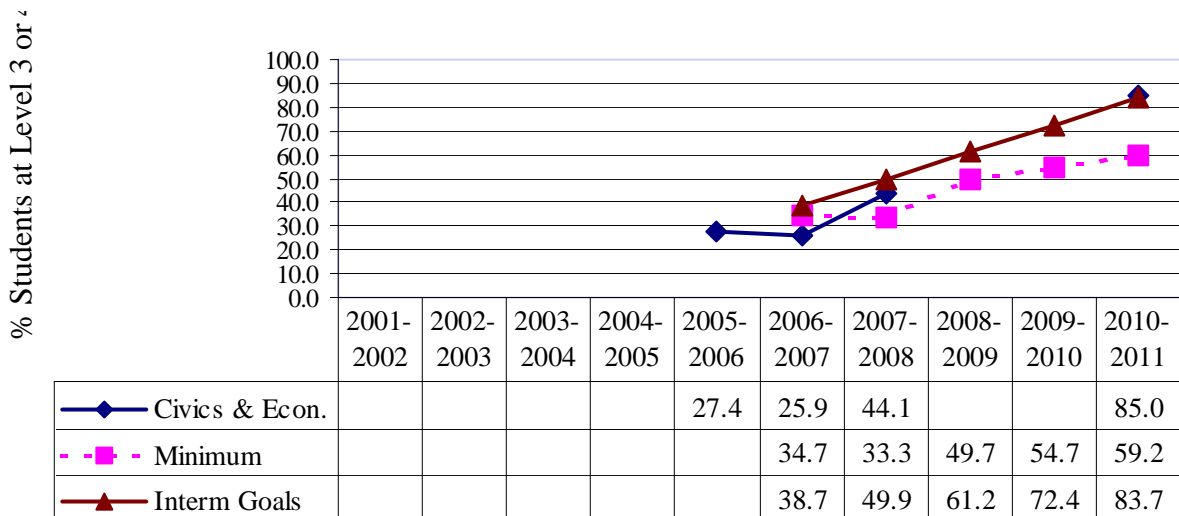
Minimum recommended trends reflect a reduction in the percent of students **NOT** proficient by 10% from the preceding year for the subject area similar to AYP safe harbor.

This is a planning tool only!

Physics: Ten-Year Trend Current Minimum Recommended Projections



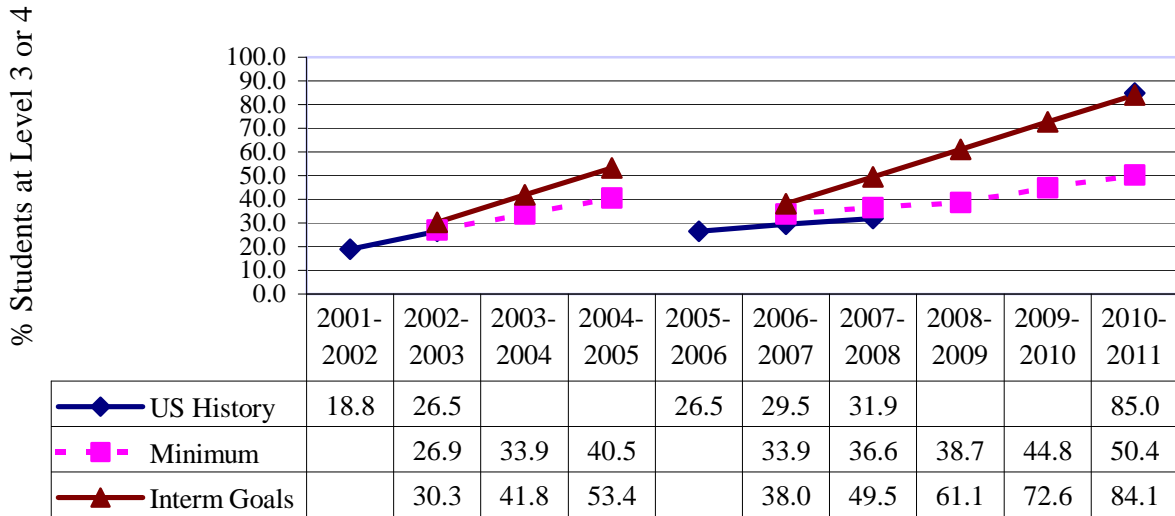
Civics and Economics: Ten-Year Trend Current Minimum Recommended Projections



Minimum recommended trends reflect a reduction in the percent of students **NOT** proficient by 10% from the preceding year for the subject area similar to AYP safe harbor.

This is a planning tool only!

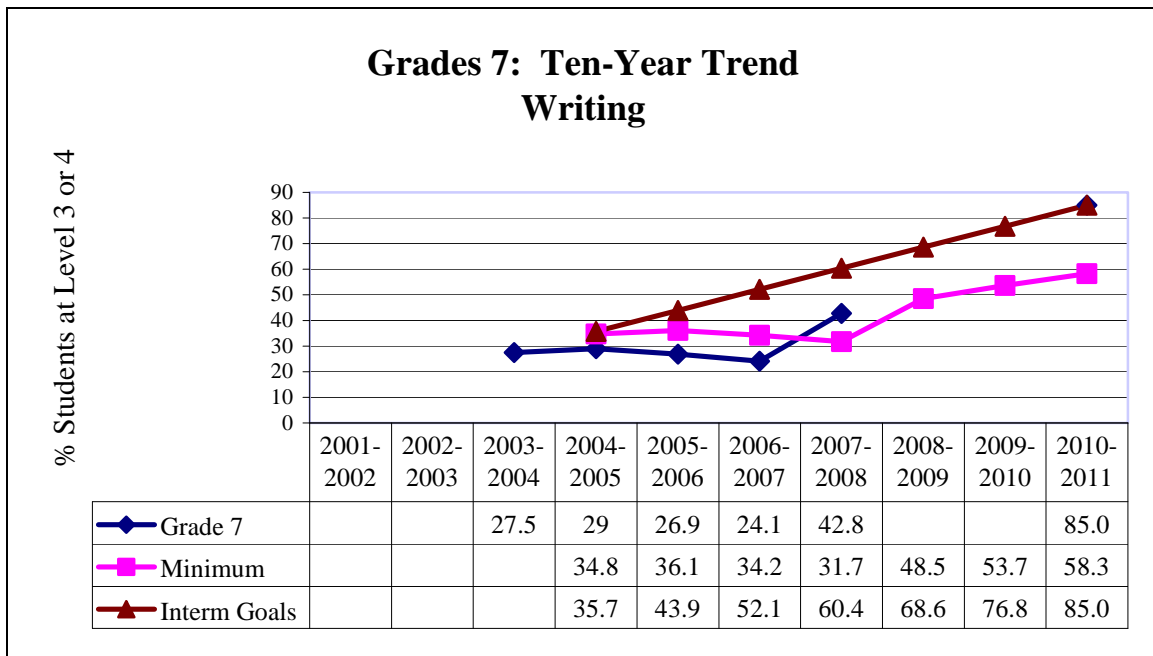
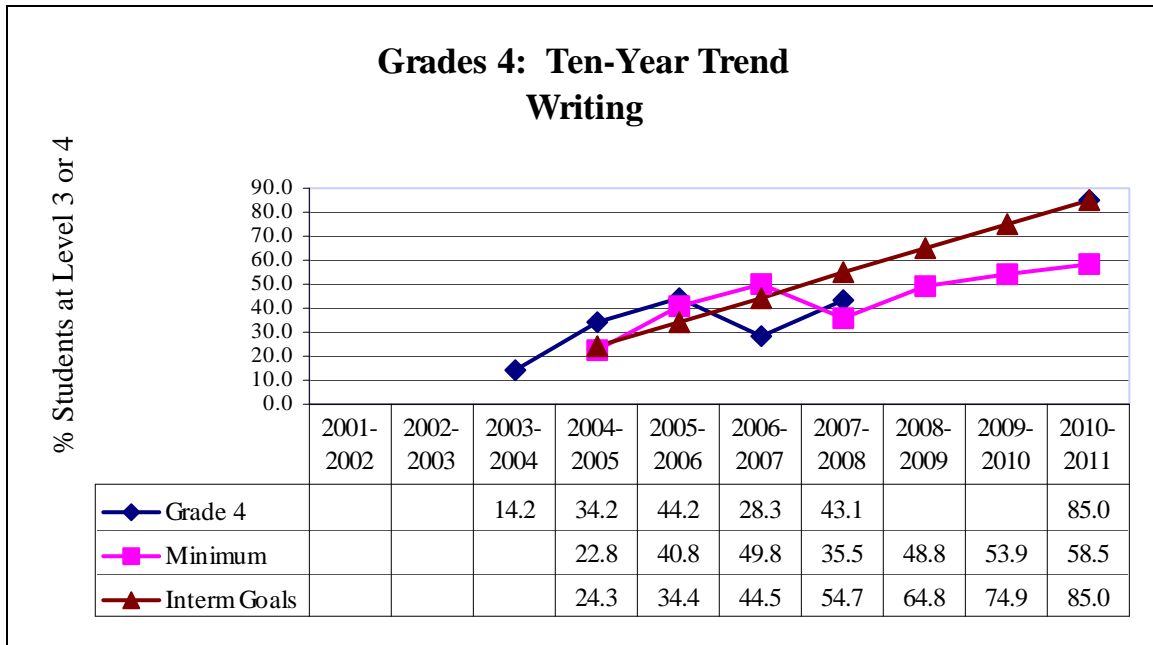
US History: Ten-Year Trend Current Minimum Recommended Projections



Minimum recommended trends reflect a reduction in the percent of students **NOT** proficient by 10% from the preceding year for the subject area similar to AYP safe harbor.

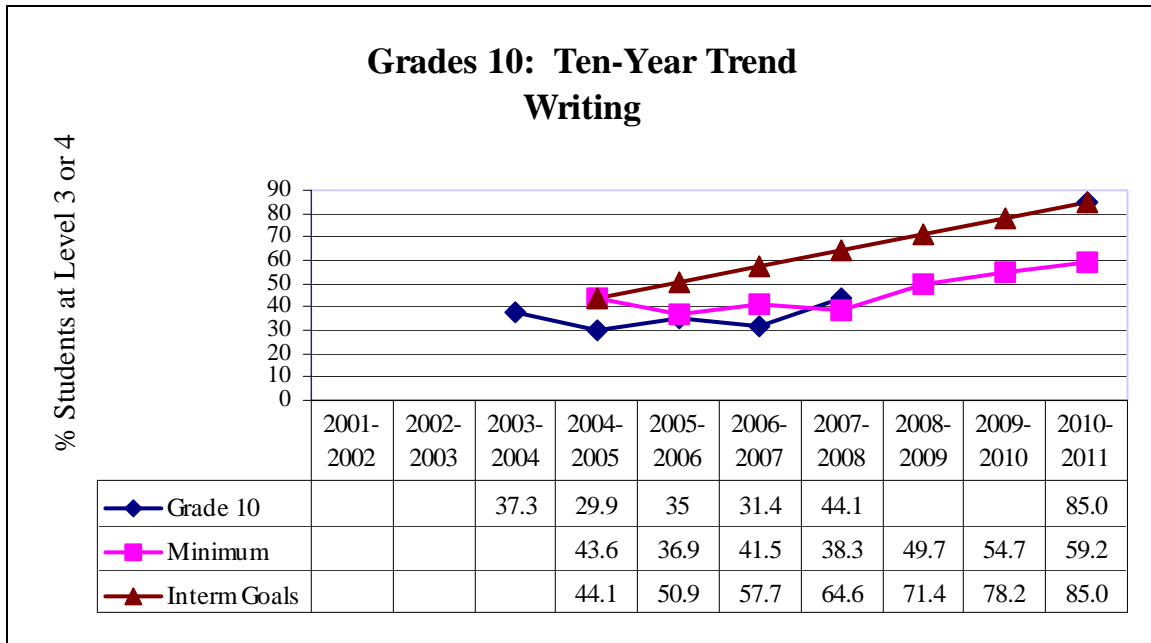
This is a planning tool only!

Hertford County Schools



Minimum recommended trends reflect a reduction in the percent of students **NOT** proficient by 10% from the preceding year for the subject area similar to AYP safe harbor.

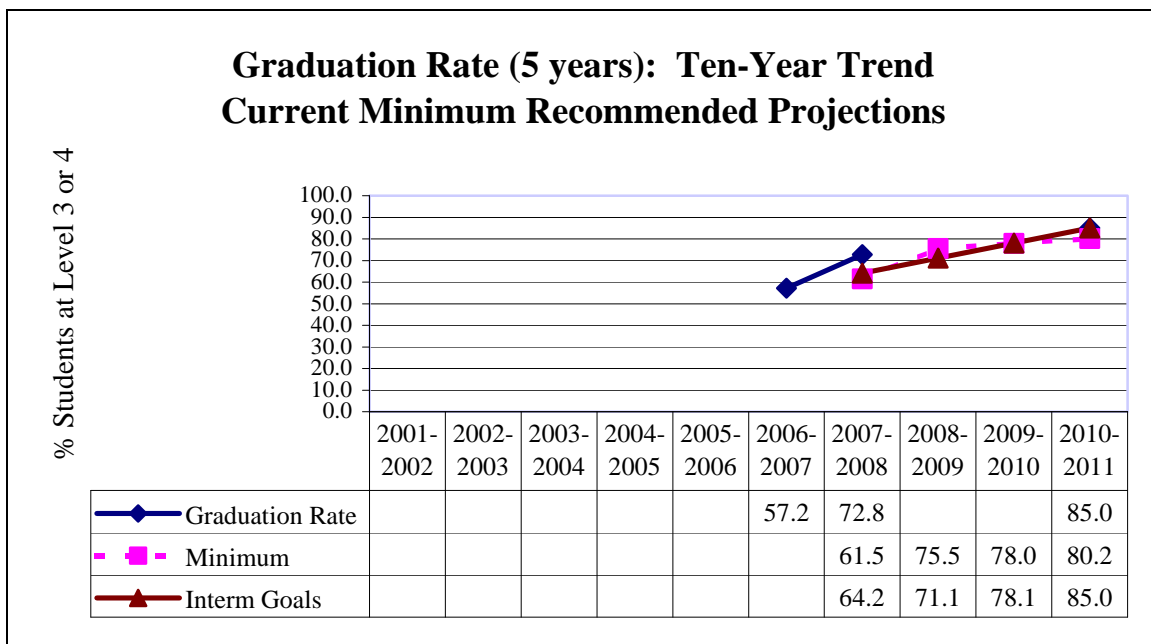
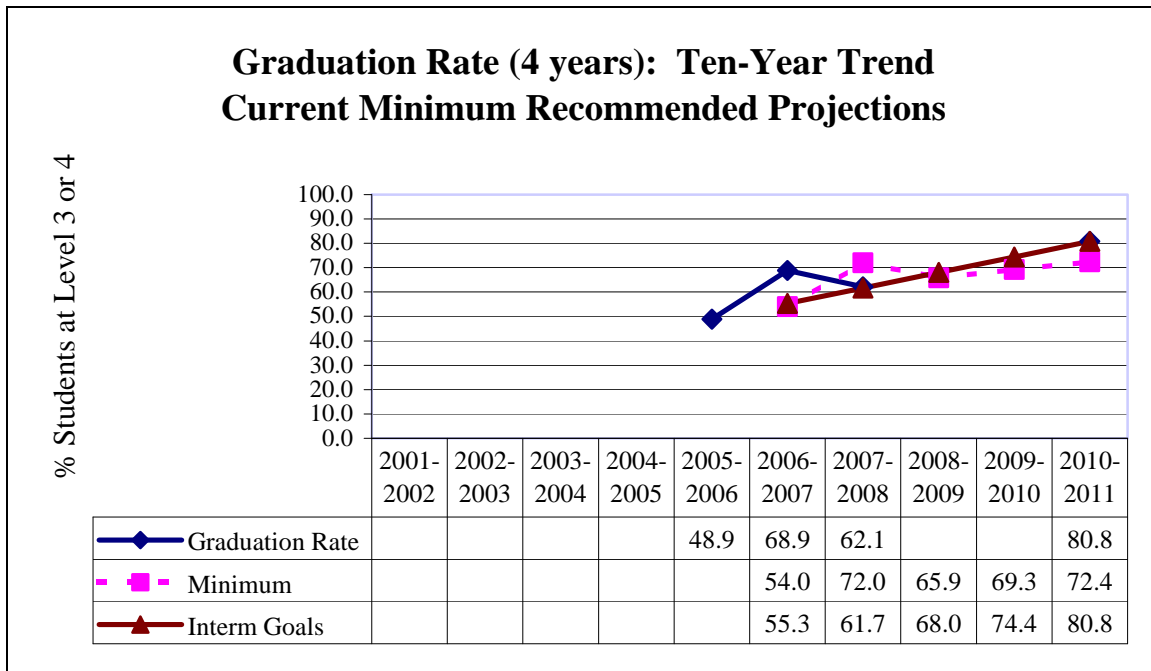
This is a planning tool only!



Minimum recommended trends reflect a reduction in the percent of students **NOT** proficient by 10% from the preceding year for the subject area similar to AYP safe harbor.

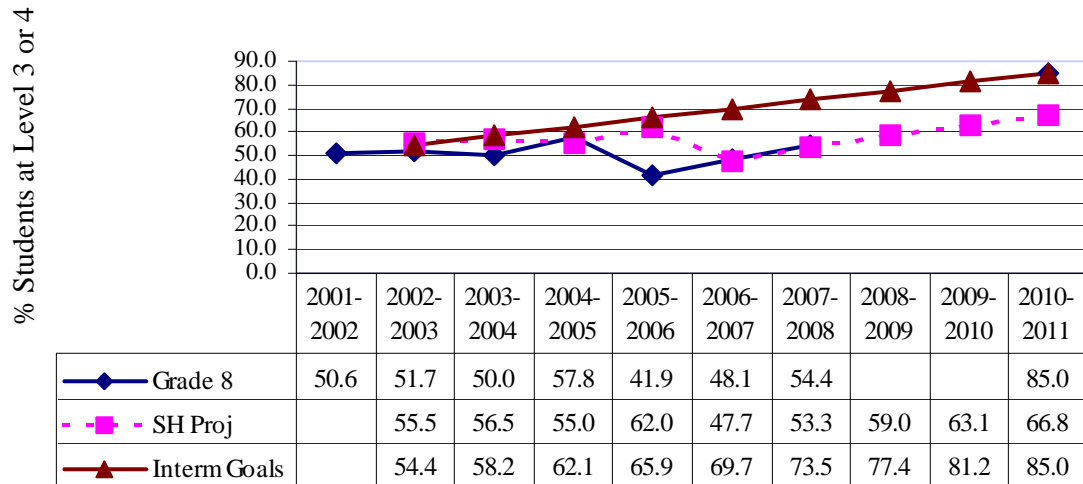
This is a planning tool only!

Miscellaneous Trends Hertford County Public Schools

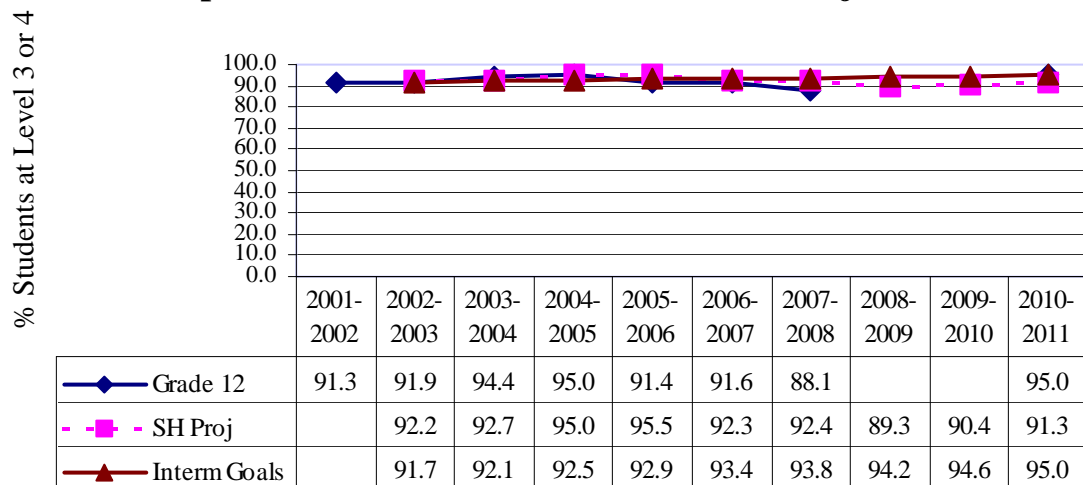


This is a planning tool only!

Eighth Grade: Ten-Year Trend Computer Skills and Current Safe Harbor Projections

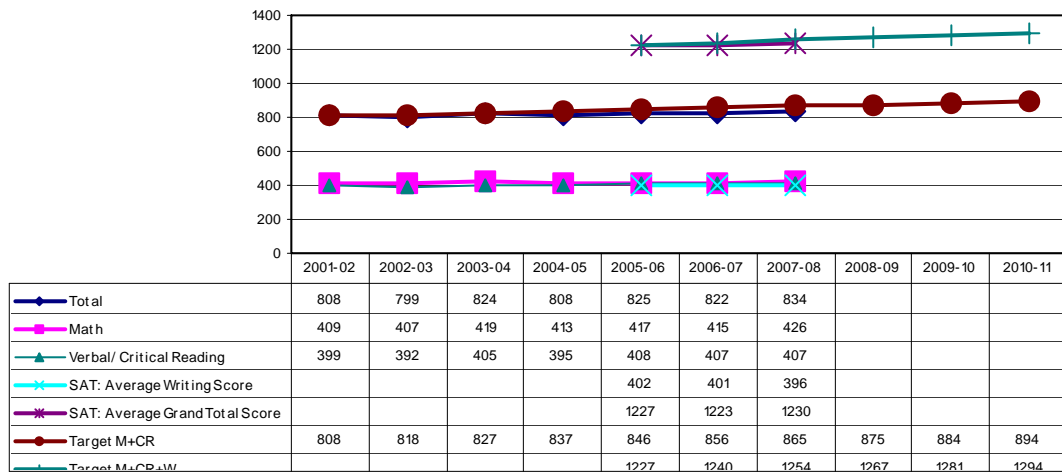


Twelfth Grade: Ten-Year Trend Computer Skills and Current Safe Harbor Projections

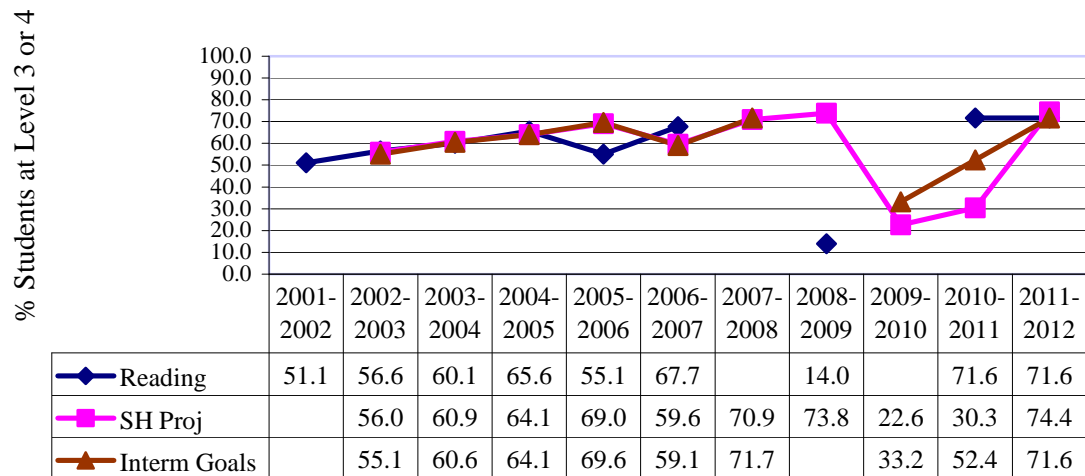


This is a planning tool only!

Hertford County Public Schools SAT Performance and Targets

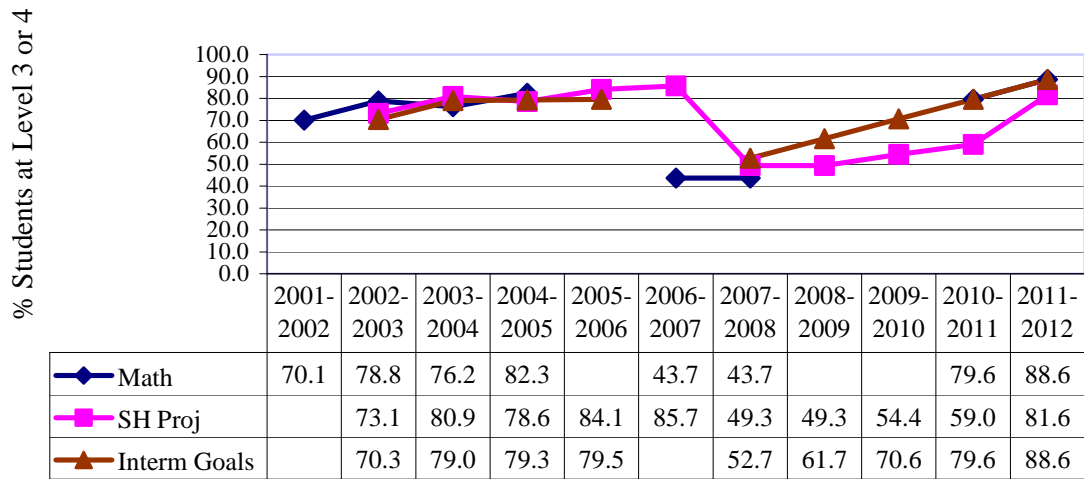


Third Grade PreTest: Ten-Year Trend Reading and Current Safe Harbor Projections



This is a planning tool only!

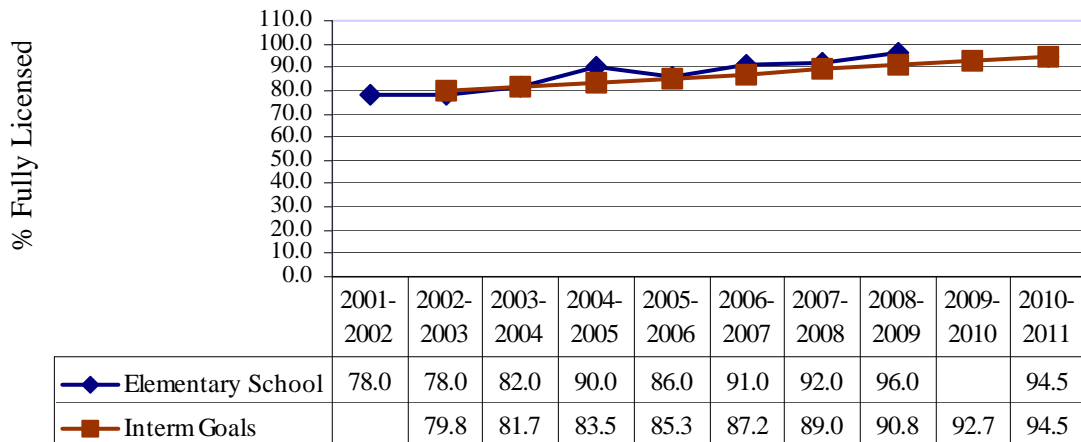
Third Grade PreTest: Ten-Year Trend Math and Current Safe Harbor Projections



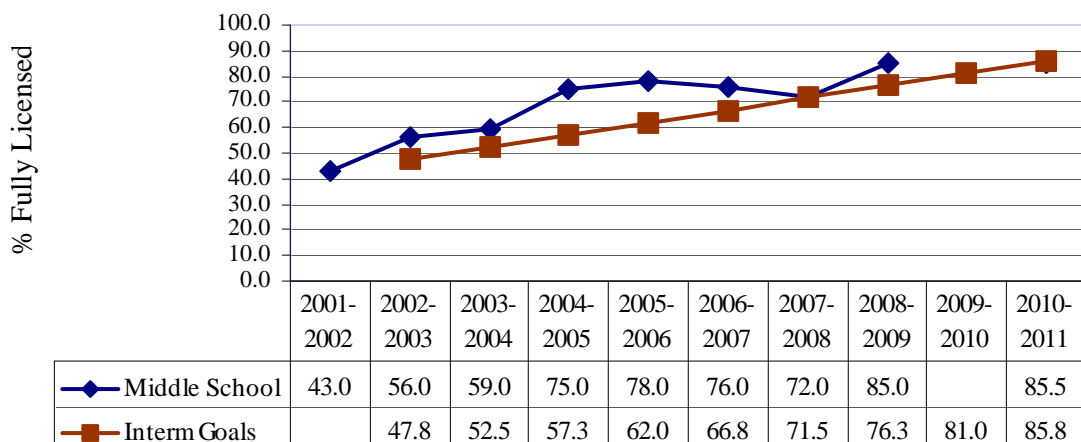
This is a planning tool only!

Miscellaneous Trends Hertford County Public Schools

**% Fully Licensed Teachers: Ten-Year Trend
Elementary School Trends and Projections**

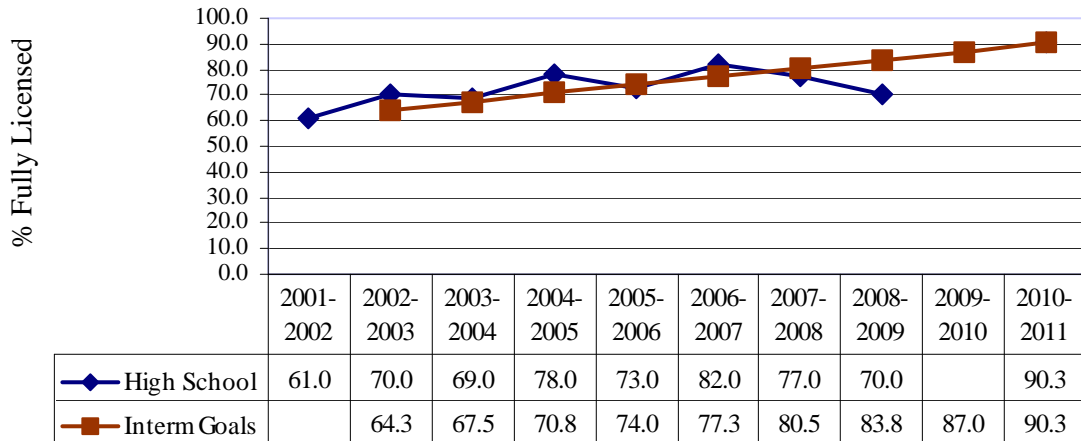


**% Fully Licensed Teachers: Ten-Year Trend
Middle School Trends and Projections**

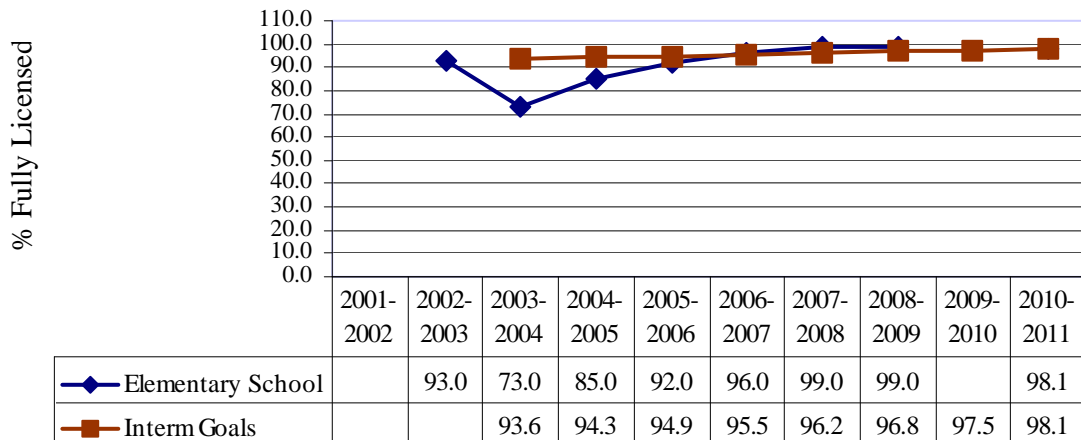


This is a planning tool only!

% Fully Licensed Teachers: Ten-Year Trend High School Trends and Projections

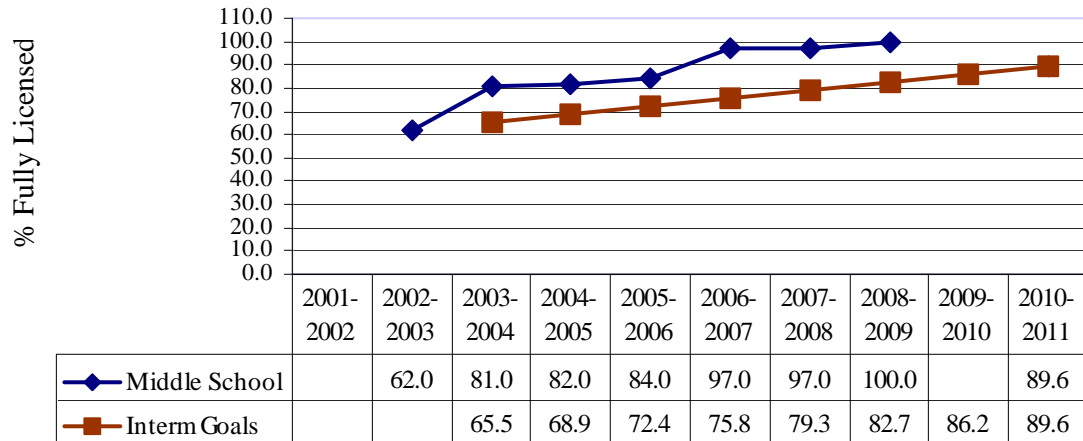


% Classes Taught by Highly Qualified Teachers: Ten-Year Elementary School Trends and Projections

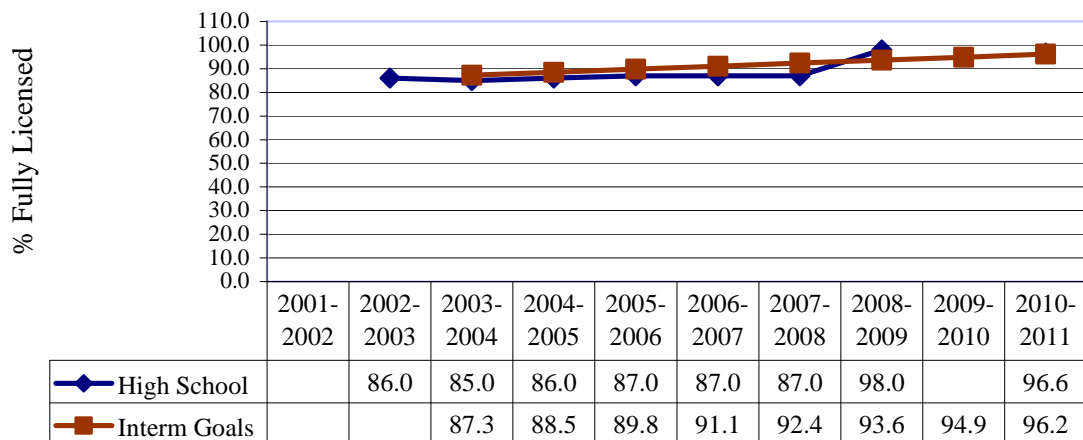


This is a planning tool only!

% Classes Taught by Highly Qualified Teachers: Ten-Year Middle School Trends and Projections

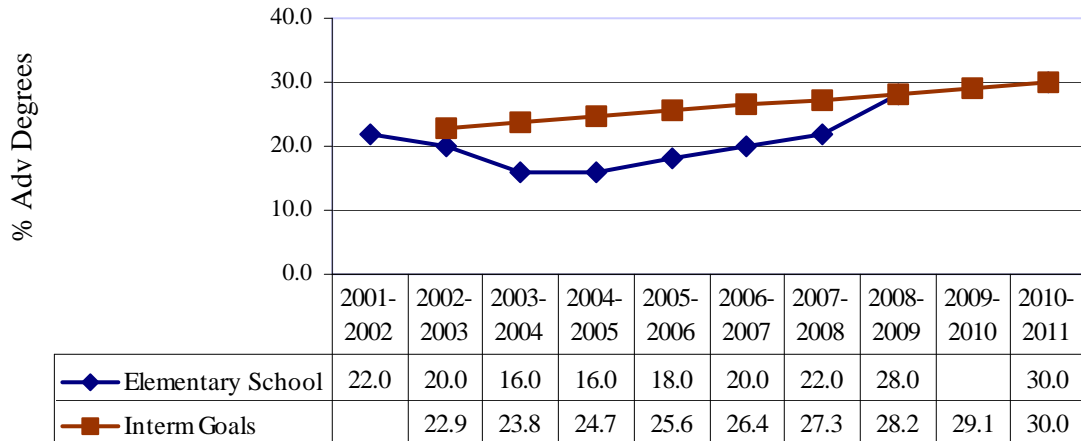


% Classes Taught by Highly Qualified Teachers: Ten-Year High School Trends and Projections

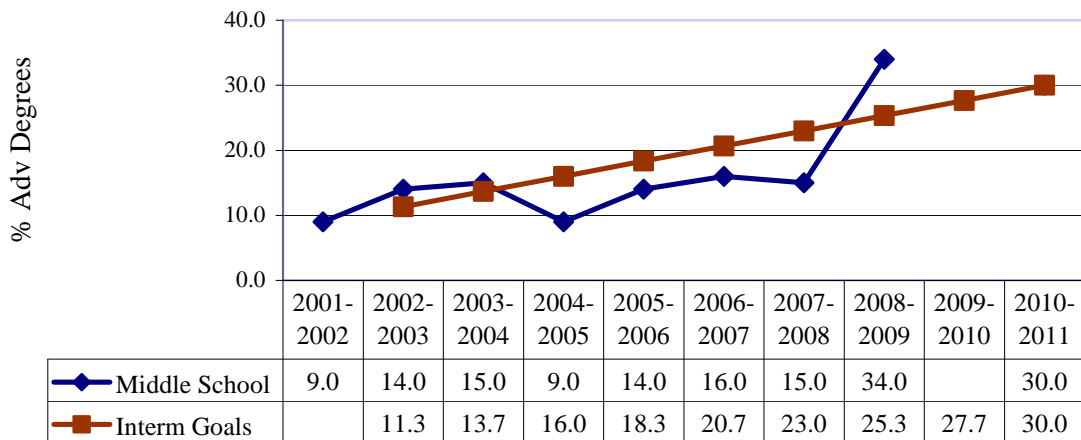


This is a planning tool only!

% Teachers With Advanced Degrees: Ten-Year Elementary School Trends and Projections

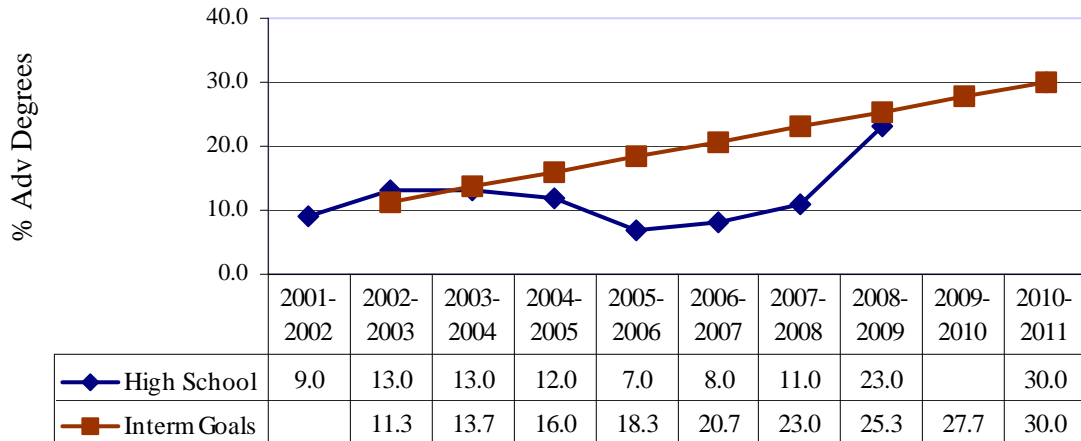


% Teachers With Advanced Degrees: Ten-Year Middle School Trends and Projections

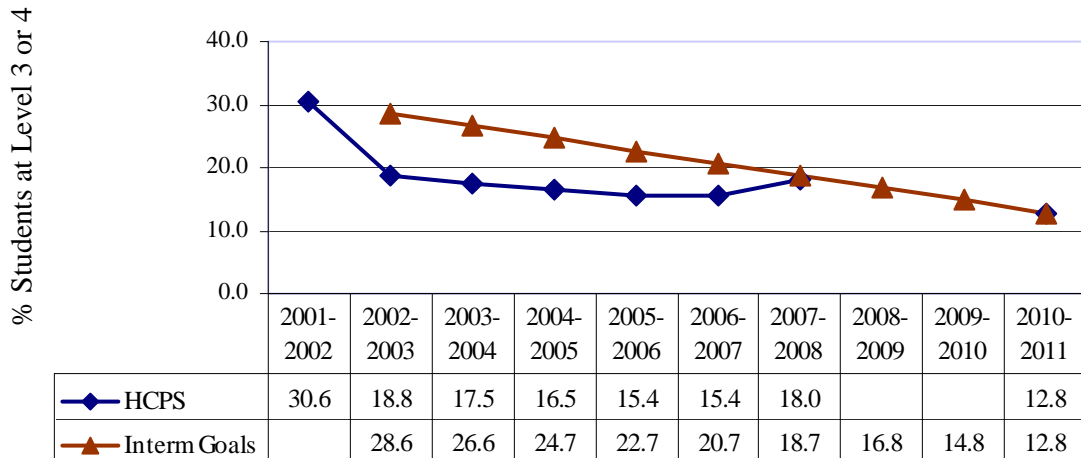


This is a planning tool only!

% Teachers With Advanced Degrees: Ten-Year High School Trends and Projections



Teacher Turnover: Ten-Year Trend Trends and Projections



This is a planning tool only!