
***Columbus County Schools
District SACS-CASI/School Improvement
Parent Survey -- Individual School Report
December 15, 2006***

70 Respondents

Responses by School

<u>School</u>	<u>Count</u>	<u>Ratio</u>
Acme Delco Middle	70	100.0%
Response Total:	70	100.0%

Responses by Grade

<u>Grade</u>	<u>Count</u>	<u>Ratio</u>
Grade 6	23	33.3%
Grade 7	17	24.6%
Grade 8	29	42.0%
Response Total:	69	98.6%

Responses by Gender

<u>Gender</u>	<u>Count</u>	<u>Ratio</u>
Male	29	41.4%
Female	41	58.6%
Response Total:	70	100.0%

Responses by Ethnicity

<u>Ethnicity</u>	<u>Count</u>	<u>Ratio</u>
American Indian	1	1.4%
Asian	0	0.0%
Black	25	36.2%
Hispanic	9	13.0%
Multi-racial	2	2.9%
White	32	46.4%
Other	0	0.0%
Response Total:	69	98.6%

Overall grade given this school

<u>Grade</u>	<u>Count</u>	<u>Ratio</u>
School Grade-A	19	27.9%
School Grade-B	29	42.6%
School Grade-C	12	17.6%
School Grade-D	6	8.8%
School Grade-F	2	2.9%
Response Total:	68	97.1%

Overall grade given this school school district

<u>Grade</u>	<u>Count</u>	<u>Ratio</u>
District Grade-A	15	22.1%
District Grade-B	24	35.3%
District Grade-C	20	29.4%
District Grade-D	5	7.4%
District Grade-F	4	5.9%
Response Total:	68	97.1%

Which of the following technology do you have at home?

<u>Response</u>	<u>Count</u>	<u>Ratio</u>
Computer	9	13.2%
Computer and Internet	47	69.1%
Neither	12	17.6%
Response Total:	68	97.1%

Expectations and School Climate

01. My child feels safe at this school.

<u>Opinion</u>	<u>Count</u>	<u>Ratio</u>
Strongly Agree	20	29.0%
Agree	42	60.9%
Disagree	6	8.7%
Strongly Disagree	0	
No Opinion	1	1.4%
Response Total:	69	98.6%

02. My child’s teachers utilize class time in an effective manner.

<u>Opinion</u>	<u>Count</u>	<u>Ratio</u>
Strongly Agree	10	14.5%
Agree	44	63.8%
Disagree	8	11.6%
Strongly Disagree	2	2.9%
No Opinion	5	7.2%
Response Total:	69	98.6%

03. Adults treat students with respect in this school.

<u>Opinion</u>	<u>Count</u>	<u>Ratio</u>
Strongly Agree	14	20.3%
Agree	41	59.4%
Disagree	10	14.5%
Strongly Disagree	0	
No Opinion	4	5.8%
Response Total:	69	98.6%

04. The principal knows what is going on in classes.

<u>Opinion</u>	<u>Count</u>	<u>Ratio</u>
Strongly Agree	13	18.8%
Agree	37	53.6%
Disagree	14	20.3%
Strongly Disagree	1	1.4%
No Opinion	4	5.8%
Response Total:	69	98.6%

05. All staff members care about what happens to the students.

<u>Opinion</u>	<u>Count</u>	<u>Ratio</u>
Strongly Agree	12	17.6%
Agree	42	61.8%
Disagree	10	14.7%
Strongly Disagree	1	1.5%
No Opinion	3	4.4%
Response Total:	68	97.1%

06. Teachers at this school enjoy teaching.

<u>Opinion</u>	<u>Count</u>	<u>Ratio</u>
Strongly Agree	4	5.9%
Agree	41	60.3%
Disagree	9	13.2%
Strongly Disagree	1	1.5%
No Opinion	13	19.1%
Response Total:	68	97.1%

07. Bullying is NOT a problem at this school.

<u>Opinion</u>	<u>Count</u>	<u>Ratio</u>
Strongly Agree	10	14.7%
Agree	27	39.7%
Disagree	15	22.1%
Strongly Disagree	7	10.3%
No Opinion	9	13.2%
Response Total:	68	97.1%

08. Alcohol use on campus is NOT widespread among students who attend this school.

<u>Opinion</u>	<u>Count</u>	<u>Ratio</u>
Strongly Agree	17	25.4%
Agree	37	55.2%
Disagree	6	9.0%
Strongly Disagree	2	3.0%
No Opinion	5	7.5%
Response Total:	67	95.7%

09. Tobacco use on campus is NOT widespread among students who attend this school.

<u>Opinion</u>	<u>Count</u>	<u>Ratio</u>
Strongly Agree	17	24.6%
Agree	34	49.3%
Disagree	7	10.1%
Strongly Disagree	3	4.3%
No Opinion	8	11.6%
Response Total:	69	98.6%

10. Drug use on campus is NOT a serious problem among students who attend this school.

<u>Opinion</u>	<u>Count</u>	<u>Ratio</u>
Strongly Agree	18	26.1%
Agree	30	43.5%
Disagree	10	14.5%
Strongly Disagree	1	1.4%
No Opinion	10	14.5%
Response Total:	69	98.6%

11. My child's teachers allow me to have input on decisions affecting instructional practices for my child.

<u>Opinion</u>	<u>Count</u>	<u>Ratio</u>
Strongly Agree	12	17.4%
Agree	40	58.0%
Disagree	5	7.2%
Strongly Disagree	0	
No Opinion	12	17.4%
Response Total:	69	98.6%

12. All students have an equal opportunity to participate in activities (clubs, musical groups, athletics, etc.).

<u>Opinion</u>	<u>Count</u>	<u>Ratio</u>
Strongly Agree	19	27.5%
Agree	40	58.0%
Disagree	7	10.1%
Strongly Disagree	2	2.9%
No Opinion	1	1.4%
Response Total:	69	98.6%

Discipline

13. Students are well behaved at this school.

<u>Opinion</u>	<u>Count</u>	<u>Ratio</u>
Strongly Agree	1	1.4%
Agree	35	50.0%
Disagree	16	22.9%
Strongly Disagree	8	11.4%
No Opinion	10	14.3%
Response Total:	70	100.0%

14. Staff members are consistent with enforcing rules and using appropriate measures when rules are broken.

<u>Opinion</u>	<u>Count</u>	<u>Ratio</u>
Strongly Agree	16	22.9%
Agree	33	47.1%
Disagree	16	22.9%
Strongly Disagree	1	1.4%
No Opinion	4	5.7%
Response Total:	70	100.0%

15. Students are taught strategies on how to avoid fights and arguments in school.

<u>Opinion</u>	<u>Count</u>	<u>Ratio</u>
Strongly Agree	7	10.3%
Agree	32	47.1%
Disagree	17	25.0%
Strongly Disagree	4	5.9%
No Opinion	8	11.8%
Response Total:	68	97.1%

16. Rules are fair at this school.

<u>Opinion</u>	<u>Count</u>	<u>Ratio</u>
Strongly Agree	10	14.5%
Agree	37	53.6%
Disagree	13	18.8%
Strongly Disagree	2	2.9%
No Opinion	7	10.1%
Response Total:	69	98.6%

Effective Instruction

17. Teachers utilize a variety of instructional techniques to meet the needs of students.

<u>Opinion</u>	<u>Count</u>	<u>Ratio</u>
Strongly Agree	15	22.1%
Agree	36	52.9%
Disagree	11	16.2%
Strongly Disagree	1	1.5%
No Opinion	5	7.4%
Response Total:	68	97.1%

18. In classes, students spend time using computers or other technology.

<u>Opinion</u>	<u>Count</u>	<u>Ratio</u>
Strongly Agree	10	14.7%
Agree	37	54.4%
Disagree	12	17.6%
Strongly Disagree	2	2.9%
No Opinion	7	10.3%
Response Total:	68	97.1%

19. In classes, students learn about things interesting to them.

<u>Opinion</u>	<u>Count</u>	<u>Ratio</u>
Strongly Agree	8	12.1%
Agree	37	56.1%
Disagree	12	18.2%
Strongly Disagree	5	7.6%
No Opinion	4	6.1%
Response Total:	66	94.3%

20. Homework assignments consist of things that teachers cover in class with students.

<u>Opinion</u>	<u>Count</u>	<u>Ratio</u>
Strongly Agree	17	25.4%
Agree	42	62.7%
Disagree	5	7.5%
Strongly Disagree	0	
No Opinion	3	4.5%
Response Total:	67	95.7%

21. Student work is graded fairly and equitably.

<u>Opinion</u>	<u>Count</u>	<u>Ratio</u>
Strongly Agree	17	25.4%
Agree	44	65.7%
Disagree	3	4.5%
Strongly Disagree	0	
No Opinion	3	4.5%
Response Total:	67	95.7%

22. Students are expected to do good work at this school.

<u>Opinion</u>	<u>Count</u>	<u>Ratio</u>
Strongly Agree	18	26.5%
Agree	44	64.7%
Disagree	3	4.4%
Strongly Disagree	2	2.9%
No Opinion	1	1.5%
Response Total:	68	97.1%

23. Students are provided challenging class work.

<u>Opinion</u>	<u>Count</u>	<u>Ratio</u>
Strongly Agree	15	22.1%
Agree	39	57.4%
Disagree	9	13.2%
Strongly Disagree	0	
No Opinion	5	7.4%
Response Total:	68	97.1%

24. Students work diligently to make good grades at this school.

<u>Opinion</u>	<u>Count</u>	<u>Ratio</u>
Strongly Agree	9	13.2%
Agree	36	52.9%
Disagree	11	16.2%
Strongly Disagree	4	5.9%
No Opinion	8	11.8%
Response Total:	68	97.1%

25. There are enough materials and supplies at this school.

<u>Opinion</u>	<u>Count</u>	<u>Ratio</u>
Strongly Agree	7	10.6%
Agree	28	42.4%
Disagree	13	19.7%
Strongly Disagree	14	21.2%
No Opinion	4	6.1%
Response Total:	66	94.3%

26. Someone at this school provides students with assistance when they are having trouble with class or homework.

<u>Opinion</u>	<u>Count</u>	<u>Ratio</u>
Strongly Agree	11	16.2%
Agree	22	32.4%
Disagree	26	38.2%
Strongly Disagree	4	5.9%
No Opinion	5	7.4%
Response Total:	68	97.1%

27. Tests measure what teachers have taught in their class.

<u>Opinion</u>	<u>Count</u>	<u>Ratio</u>
Strongly Agree	13	18.8%
Agree	43	62.3%
Disagree	8	11.6%
Strongly Disagree	0	
No Opinion	5	7.2%
Response Total:	69	98.6%

28. Arts Education (Ex. Music, Drama, Art, etc.) is an important part of the curriculum.

<u>Opinion</u>	<u>Count</u>	<u>Ratio</u>
Strongly Agree	17	24.6%
Agree	33	47.8%
Disagree	12	17.4%
Strongly Disagree	4	5.8%
No Opinion	3	4.3%
Response Total:	69	98.6%

29. Foreign Language should be part of the curriculum for grades K-12.

<u>Opinion</u>	<u>Count</u>	<u>Ratio</u>
Strongly Agree	26	37.7%
Agree	29	42.0%
Disagree	7	10.1%
Strongly Disagree	3	4.3%
No Opinion	4	5.8%
Response Total:	69	98.6%

30. Graduation requirements have been distributed and explained to students, parents, and staff members.

<u>Opinion</u>	<u>Count</u>	<u>Ratio</u>
Strongly Agree	8	11.6%
Agree	31	44.9%
Disagree	14	20.3%
Strongly Disagree	5	7.2%
No Opinion	11	15.9%
Response Total:	69	98.6%

31. Students are provided guidance and information about course selections and graduation requirements.

<u>Opinion</u>	<u>Count</u>	<u>Ratio</u>
Strongly Agree	11	15.7%
Agree	28	40.0%
Disagree	13	18.6%
Strongly Disagree	8	11.4%
No Opinion	10	14.3%
Response Total:	70	100.0%

32. This school has provided opportunities to prepare students for the SAT, ACT, or PSAT.

<u>Opinion</u>	<u>Count</u>	<u>Ratio</u>
Strongly Agree	10	14.3%
Agree	25	35.7%
Disagree	12	17.1%
Strongly Disagree	9	12.9%
No Opinion	14	20.0%
Response Total:	70	100.0%

Communication and Parent/Guardian Involvement

33. Parents/guardians volunteer to help in school.

<u>Opinion</u>	<u>Count</u>	<u>Ratio</u>
Strongly Agree	7	10.0%
Agree	44	62.9%
Disagree	8	11.4%
Strongly Disagree	2	2.9%
No Opinion	9	12.9%
Response Total:	70	100.0%

34. This school lets parents/guardians know how their child(ren) are doing on a regular basis.

<u>Opinion</u>	<u>Count</u>	<u>Ratio</u>
Strongly Agree	11	15.9%
Agree	43	62.3%
Disagree	11	15.9%
Strongly Disagree	3	4.3%
No Opinion	1	1.4%
Response Total:	69	98.6%

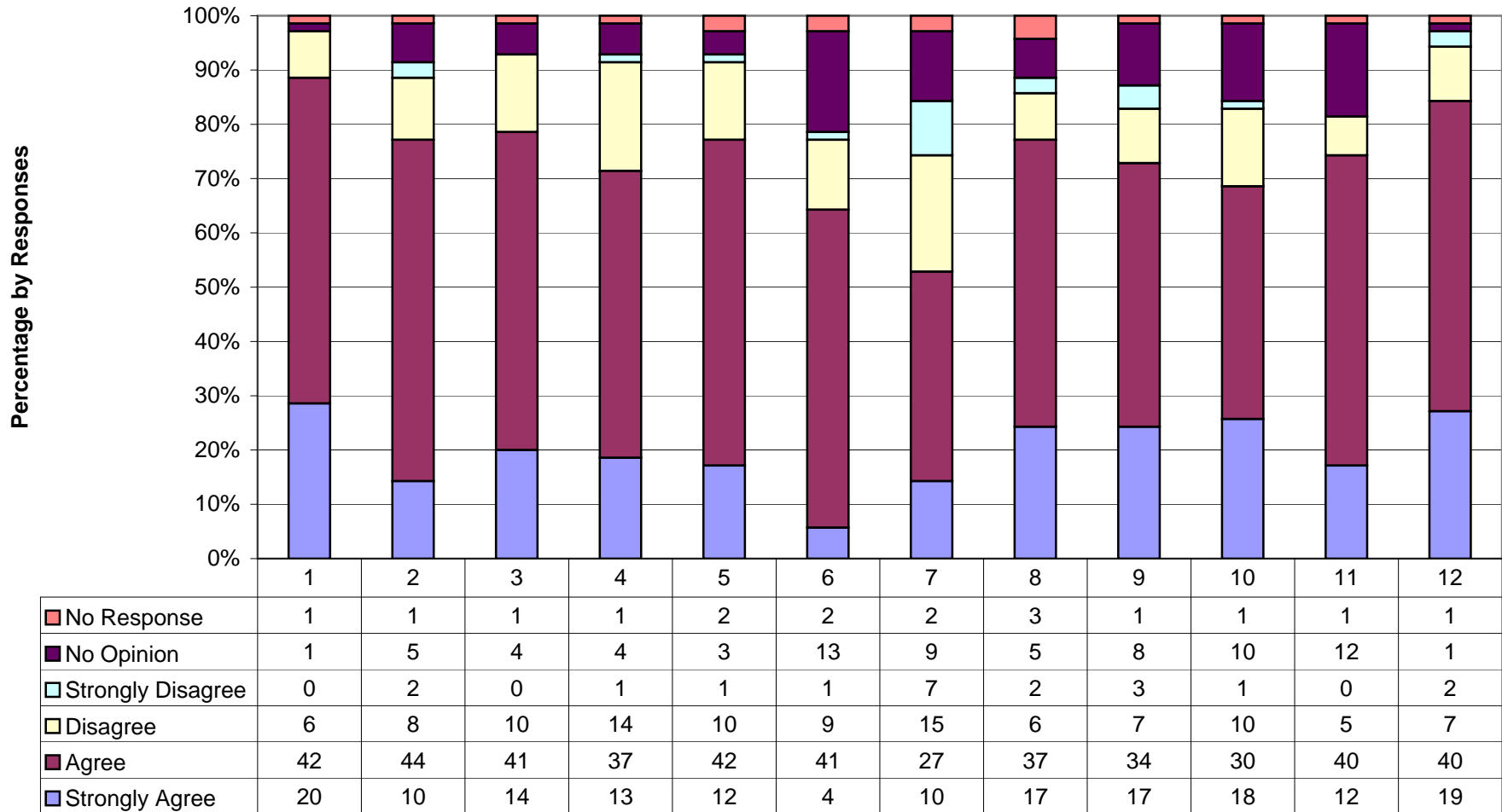
35. Parents/guardians like to visit this school.

<u>Opinion</u>	<u>Count</u>	<u>Ratio</u>
Strongly Agree	12	17.1%
Agree	33	47.1%
Disagree	11	15.7%
Strongly Disagree	3	4.3%
No Opinion	11	15.7%
Response Total:	70	100.0%

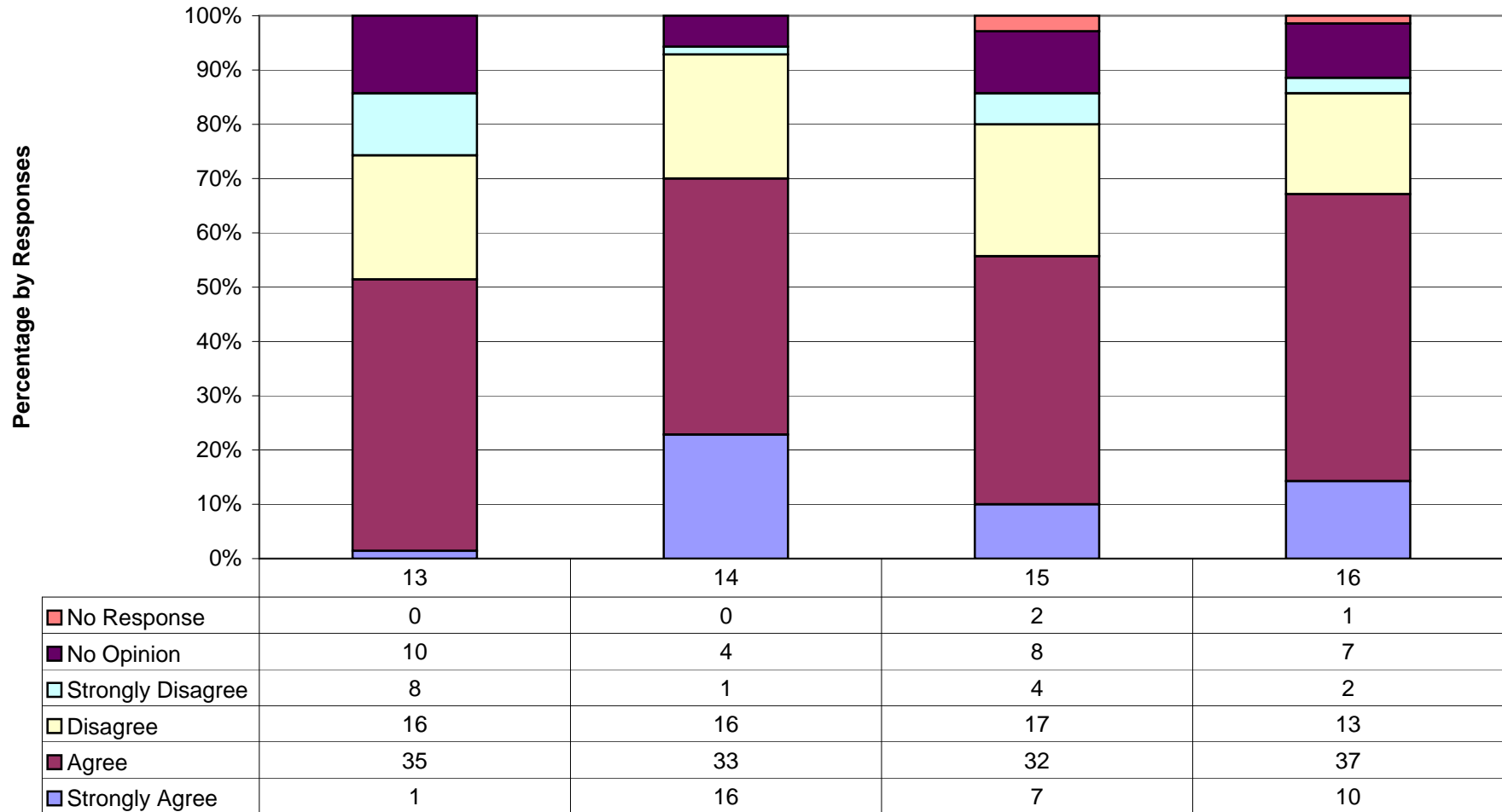
36. Parents/guardians are provided timely information of school events as well as other activities related to this school.

<u>Opinion</u>	<u>Count</u>	<u>Ratio</u>
Strongly Agree	15	21.7%
Agree	35	50.7%
Disagree	10	14.5%
Strongly Disagree	4	5.8%
No Opinion	5	7.2%
Response Total:	69	98.6%

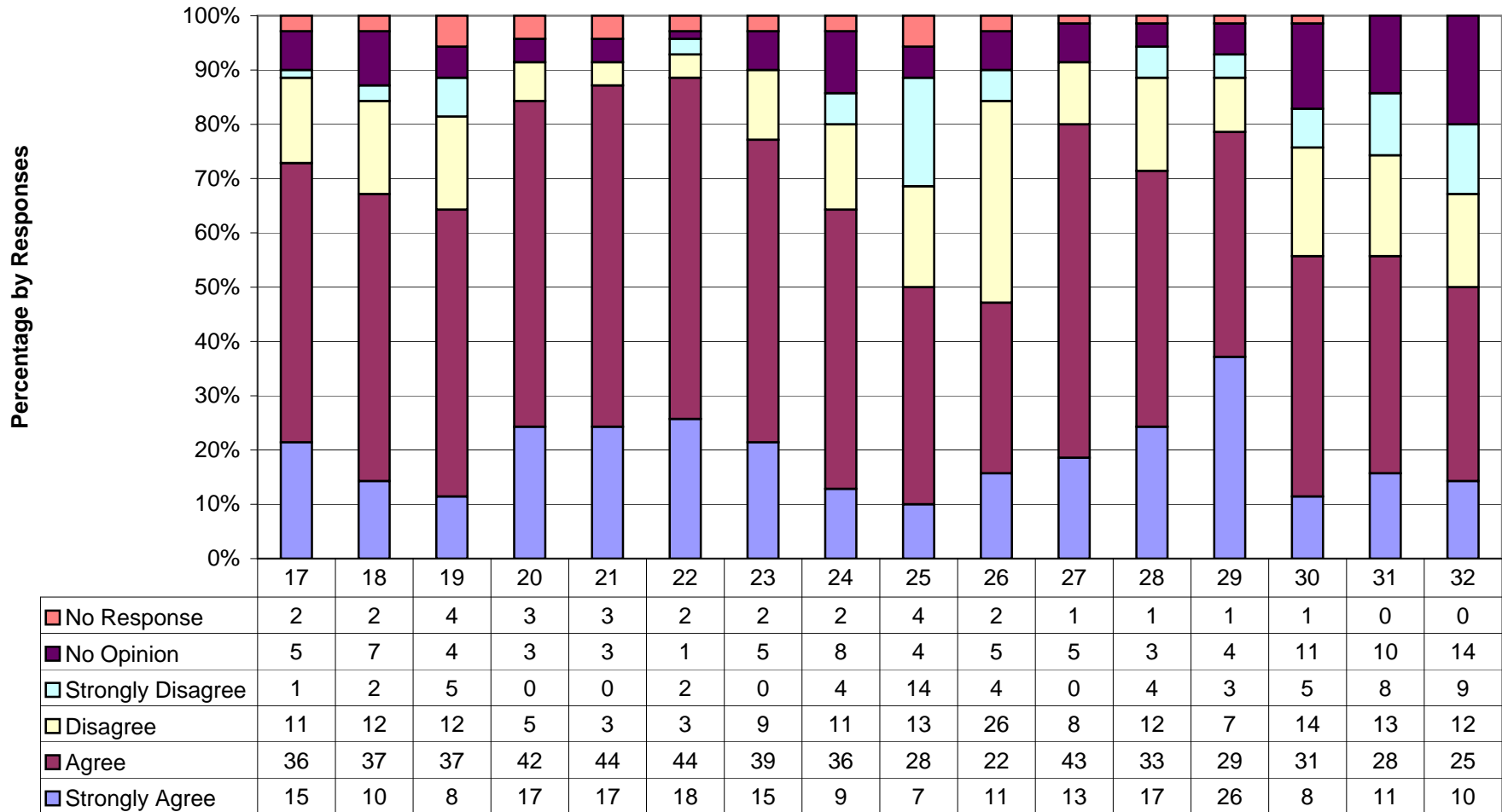
**Acme Delco Middle School: SACS-CASI/School Improvement
Parent Survey Results
Expectations and School Climate
December 15, 2006**



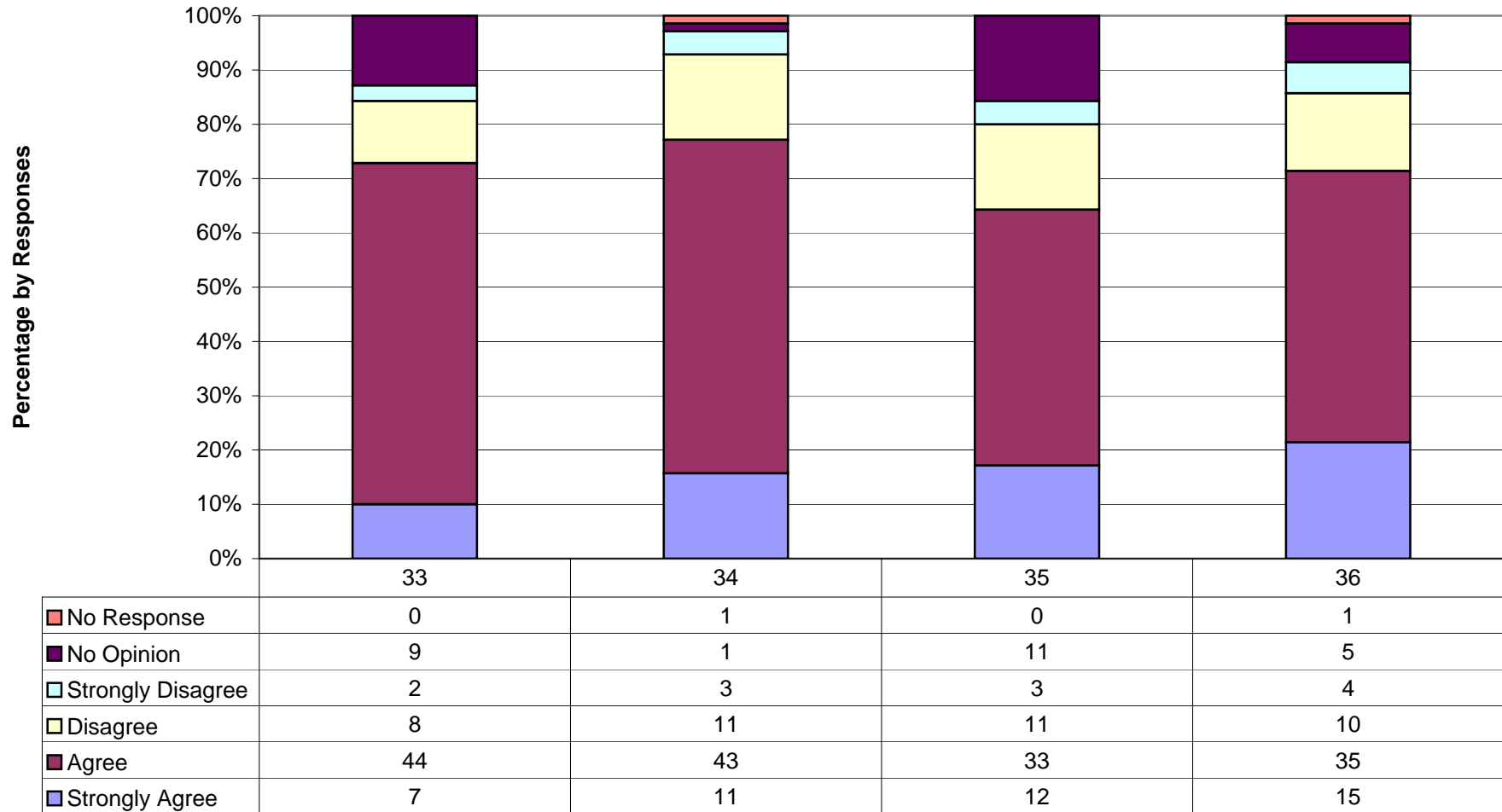
**Acme Delco Middle School: SACS-CASI/School Improvement
Parent Survey Results
Discipline
December 15, 2006**



**Acme Delco Middle School: SACS-CASI/School Improvement
Parent Survey Results
Effective Instruction
December 15, 2006**

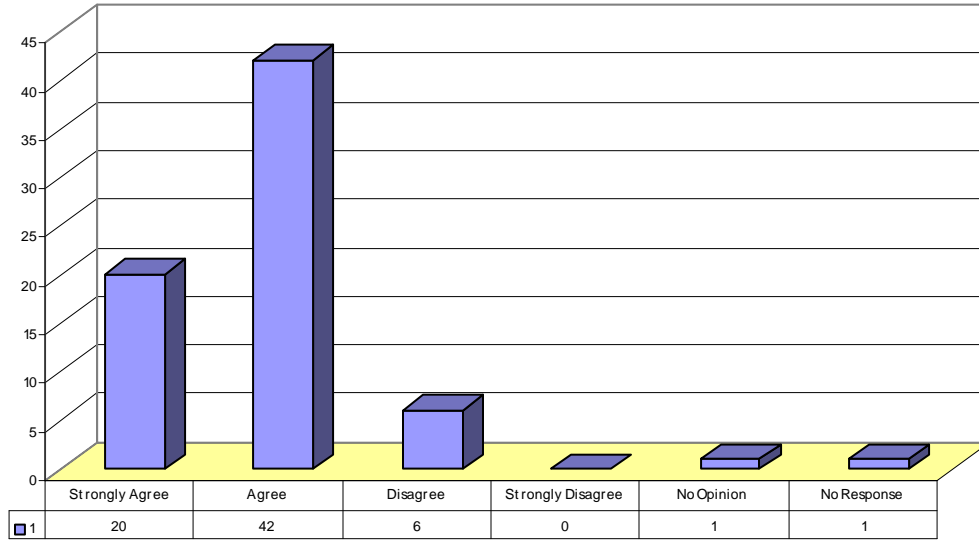


**Acme Delco Middle School: SACS-CASI/School Improvement
Parent Survey Results
Communication and Parent/Guardian Involvement
December 15, 2006**

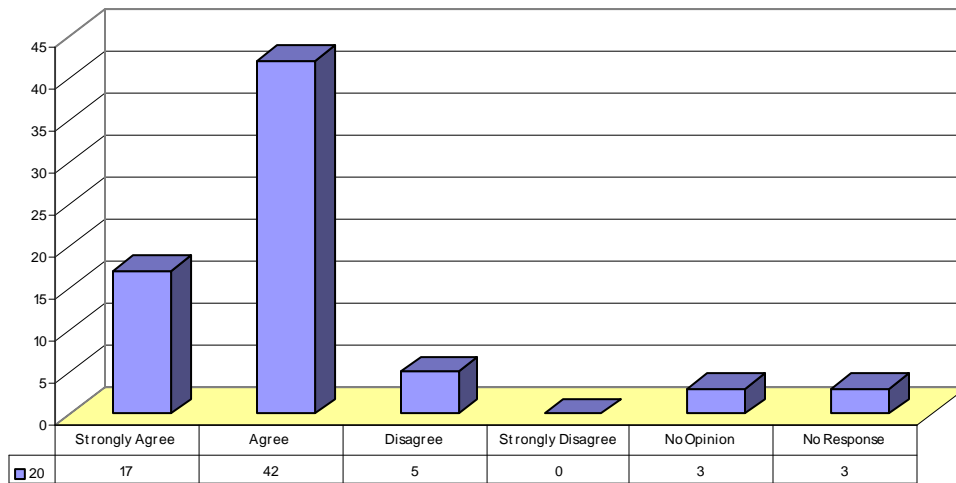


Strengths – Parent Survey

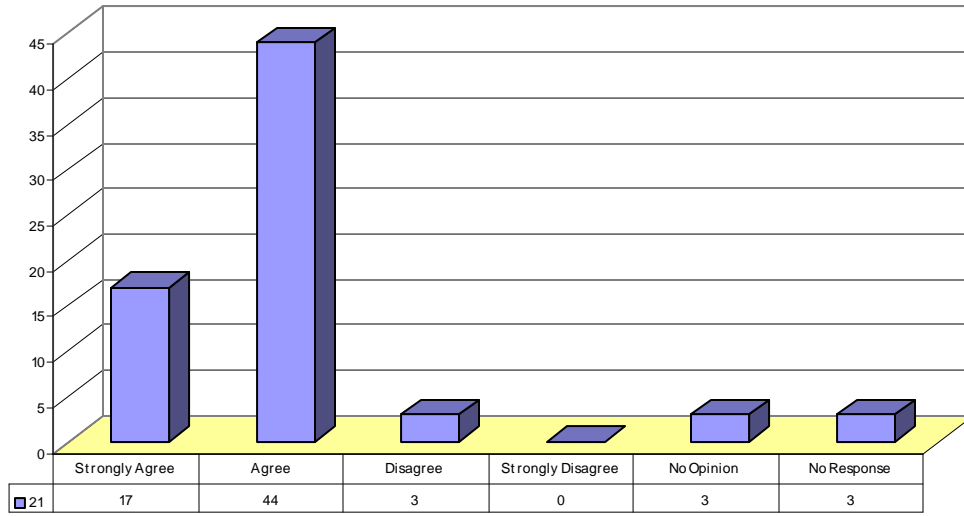
Item 1 Responses: My child feels safe at this school.



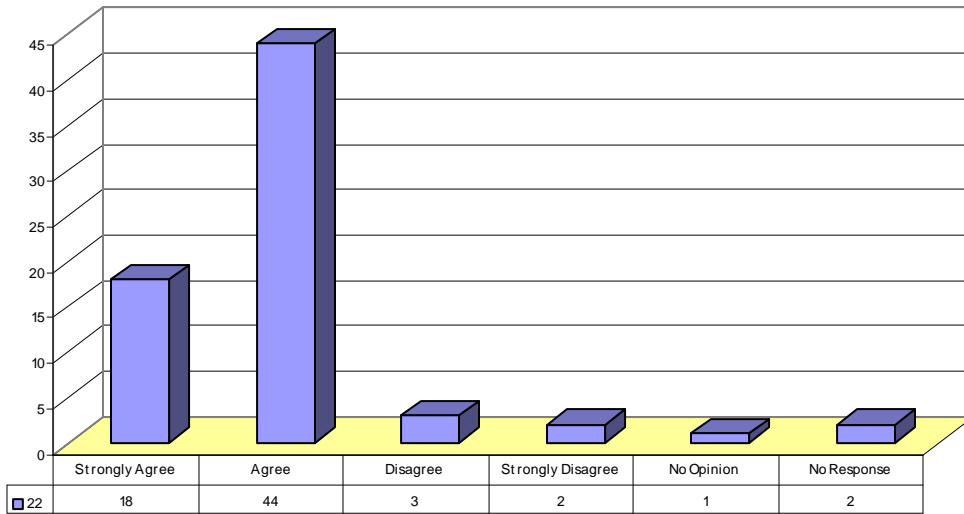
Item 20 Responses: Homework assignments consist of things that teachers cover in class with students.



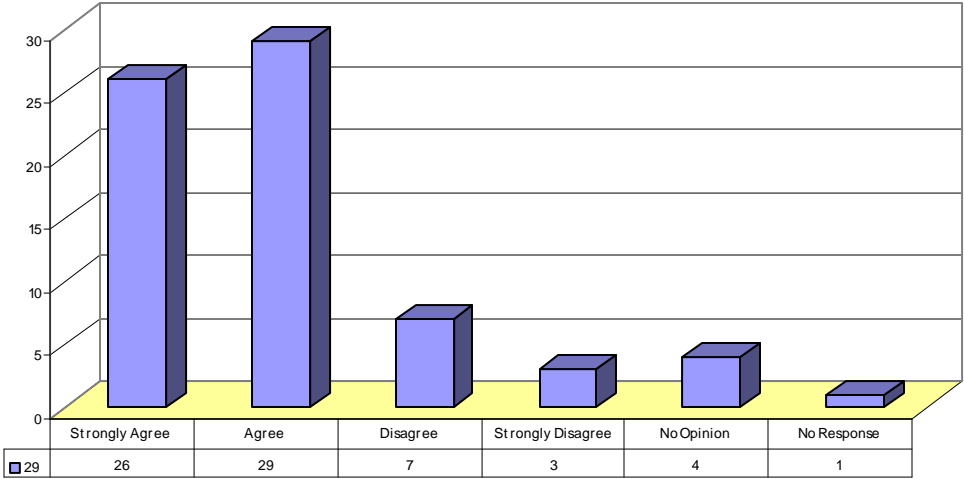
Item 21 Responses: Student work is graded fairly and equitably.



Item 22 Responses: Students are expected to do good work at this school.

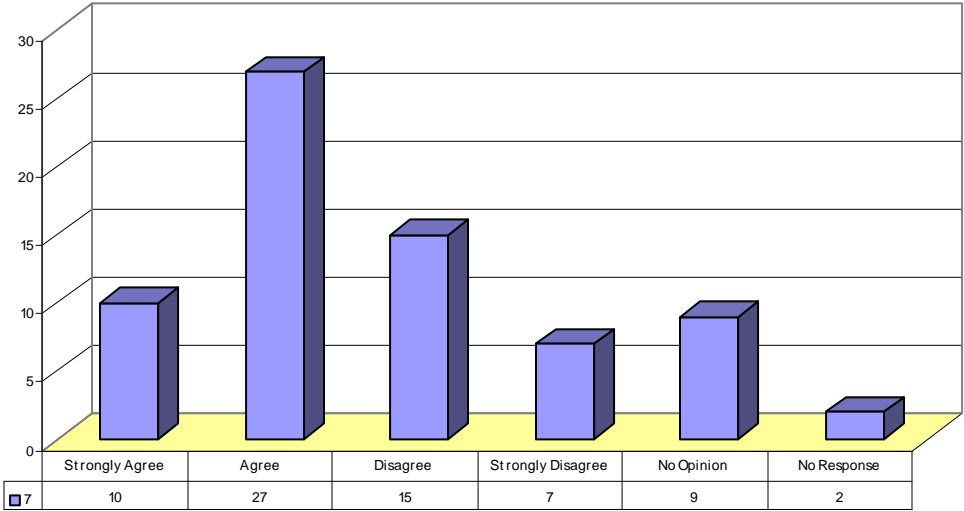


Item 29 Responses: Foreign Language should be part of the curriculum for grades K-12.

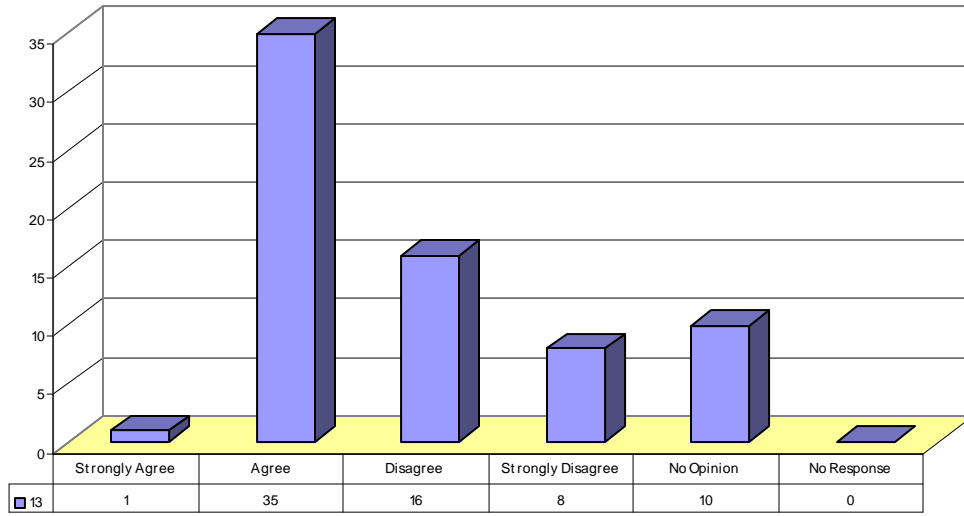


Weaknesses – Parent Survey

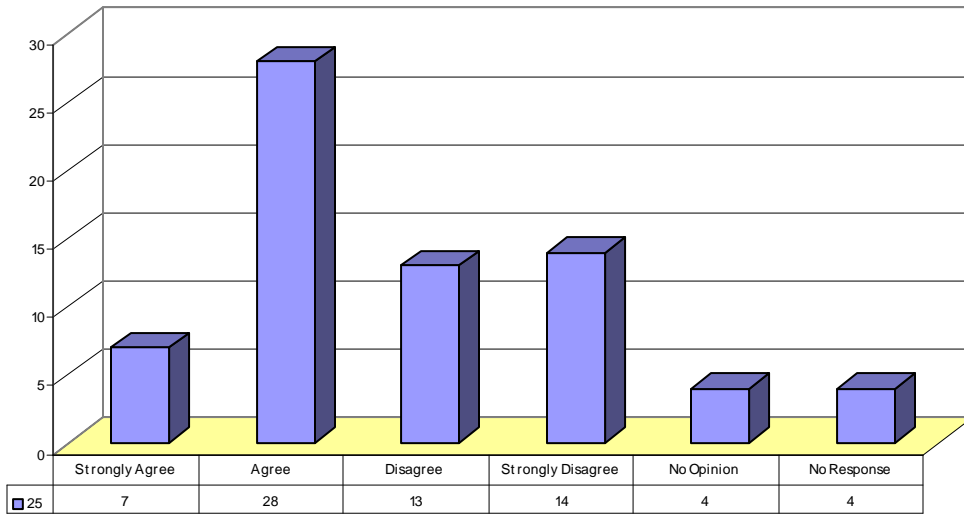
Item 7 Responses: Bullying is NOT a problem at this school.



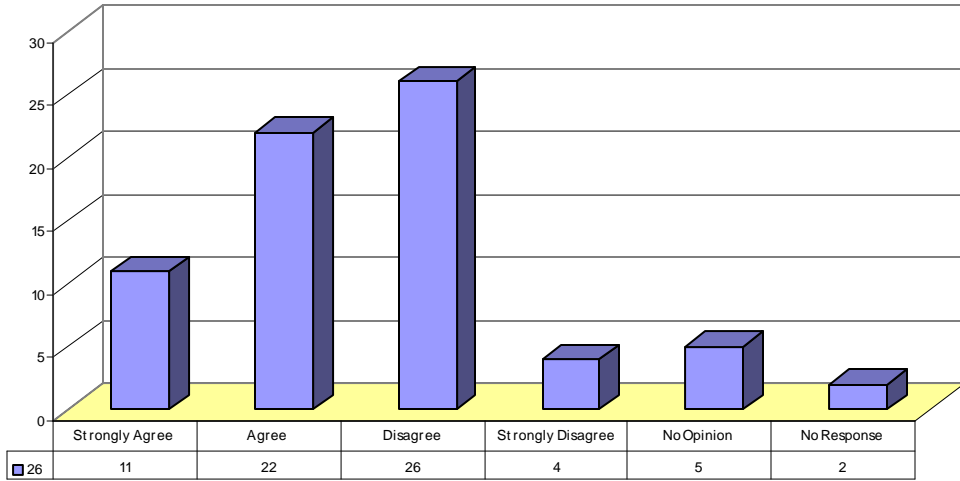
Item 13 Responses: Students are well behaved at this school.



Item 25 Responses: There are enough materials and supplies at this school.



Item 26 Responses: Someone at this school provides students with assistance when they are having trouble with class or homework.



Item 32 Responses: This school has provided opportunities to prepare students for the SAT, ACT, or PSAT.

